

EXTRA PARKING FOR 3 VANS

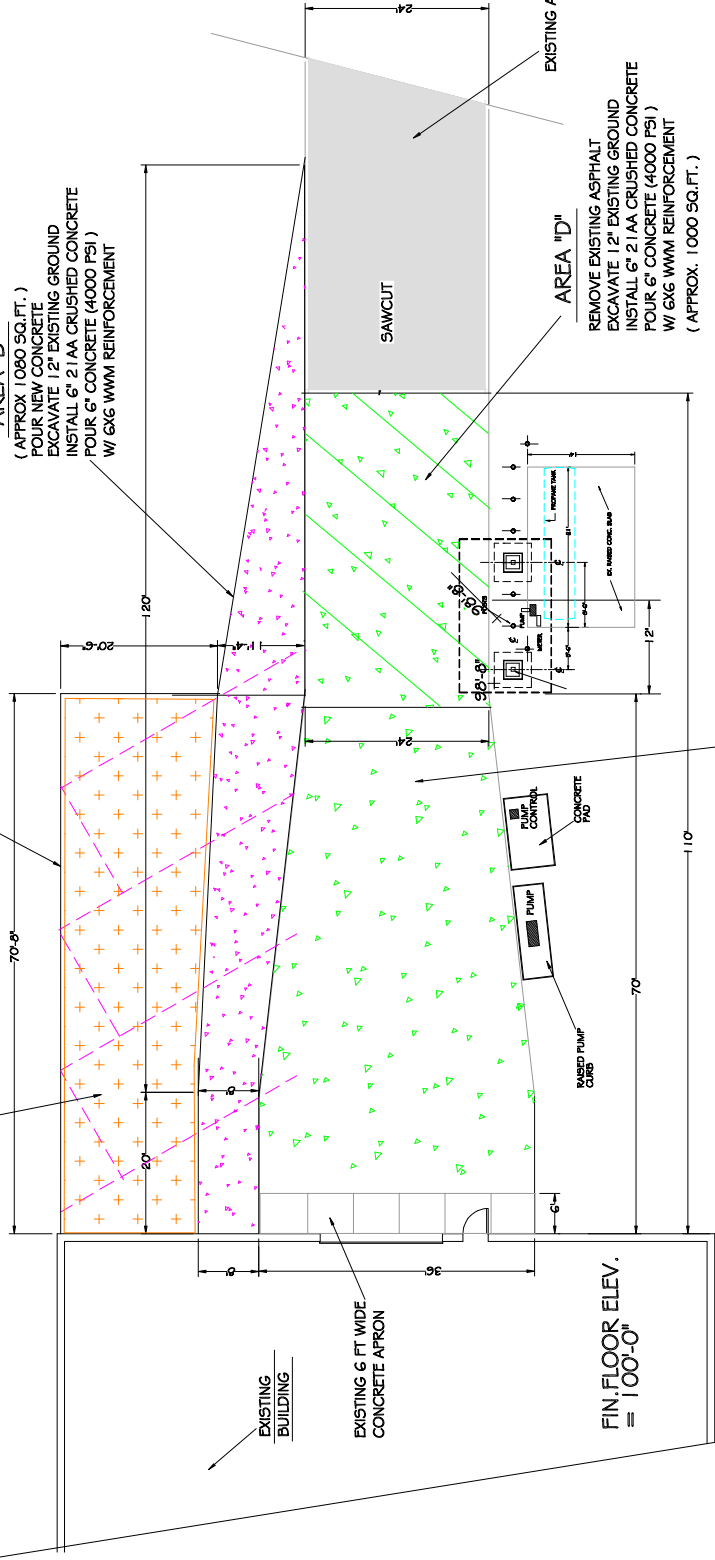
AREA "C"

(APPROX 1340 SQ.FT.)
 POUR NEW CONCRETE
 EXCAVATE 12" EXISTING GROUND
 INSTALL 6" 2" AA CRUSHED CONCRETE
 POUR 6" CONCRETE (4000 PSI)
 W/ 6X6 WMM REINFORCEMENT

CONCRETE CONTRACTOR TO
 HAUL AWAY EXCESS DIRT AFTER BACKFILL

AREA "B"

(APPROX 1080 SQ.FT.)
 POUR NEW CONCRETE
 EXCAVATE 12" EXISTING GROUND
 INSTALL 6" 2" AA CRUSHED CONCRETE
 POUR 6" CONCRETE (4000 PSI)
 W/ 6X6 WMM REINFORCEMENT



AREA "D"

REMOVE EXISTING ASPHALT
 EXCAVATE 12" EXISTING GROUND
 INSTALL 6" 2" AA CRUSHED CONCRETE
 POUR 6" CONCRETE (4000 PSI)
 W/ 6X6 WMM REINFORCEMENT
 (APPROX. 1000 SQ.FT.)

EXISTING ASPHALT TO REMAIN

AREA "A"

REMOVE EXISTING ASPHALT
 EXCAVATE 12" EXISTING GROUND
 INSTALL 6" 2" AA CRUSHED CONCRETE
 POUR 6" CONCRETE (4000 PSI)
 W/ 6X6 WMM REINFORCEMENT
 (APPROX. 2000 SQ.FT.)

AREA "A" ORIGINAL 2000 SQ.FT.
 AREA "B" REVISED 1080 SQ.FT.
 AREA "C" ADDITIONAL 1340 SQ.FT.
 AREA "D" ADDITIONAL 1000 SQ.FT.

SITE PLAN

SCALE 1/8" = 1'-0"

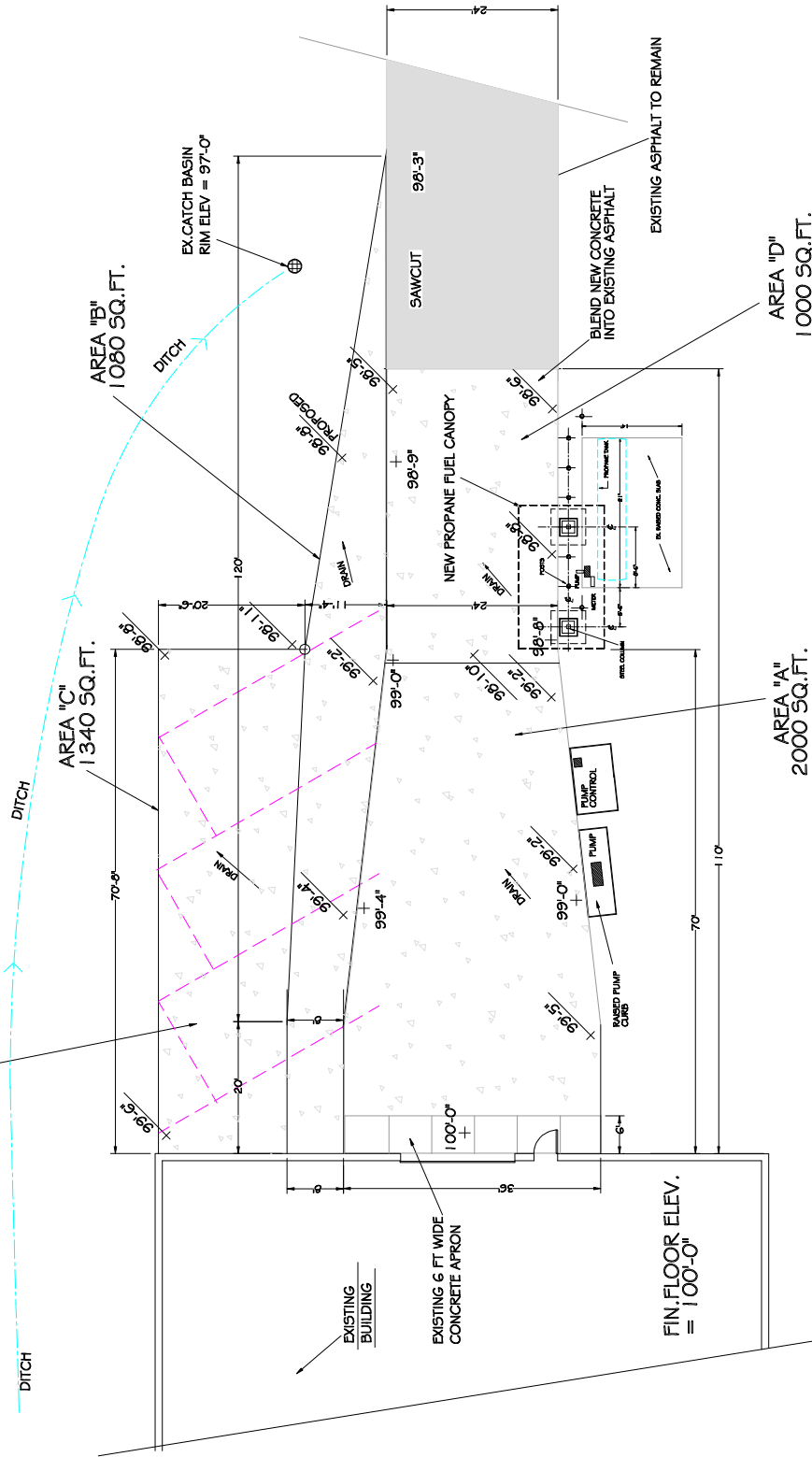
A

JOHN STEWART GC
 1645 N. MILFORD RD
 MILFORD, MI. 48381
 (248) 390-5260

21 JULY 2020
 20 JULY 2020
 13 JULY 2020
 7 MAY 2020

LIVINGSTON ESSENTIAL TRANSPORTATION BUILDING
 CONCRETE REPLACEMENT

EXTRA PARKING FOR 3 VANS



GRADING PLAN

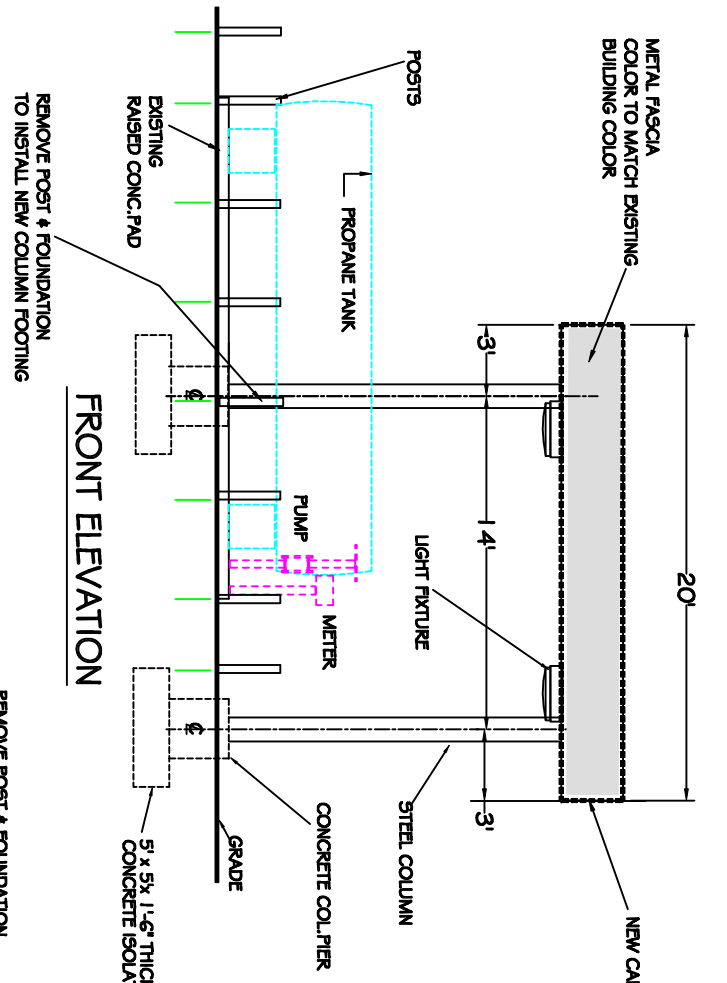
SCALE 1/8" = 1'-0"

LIVINGSTON ESSENTIAL TRANSPORTATION BUILDING CONCRETE REPLACEMENT

JOHN STEWART GC
 1645 N. MILFORD RD
 MILFORD, MI. 48381
 (248) 390-5260

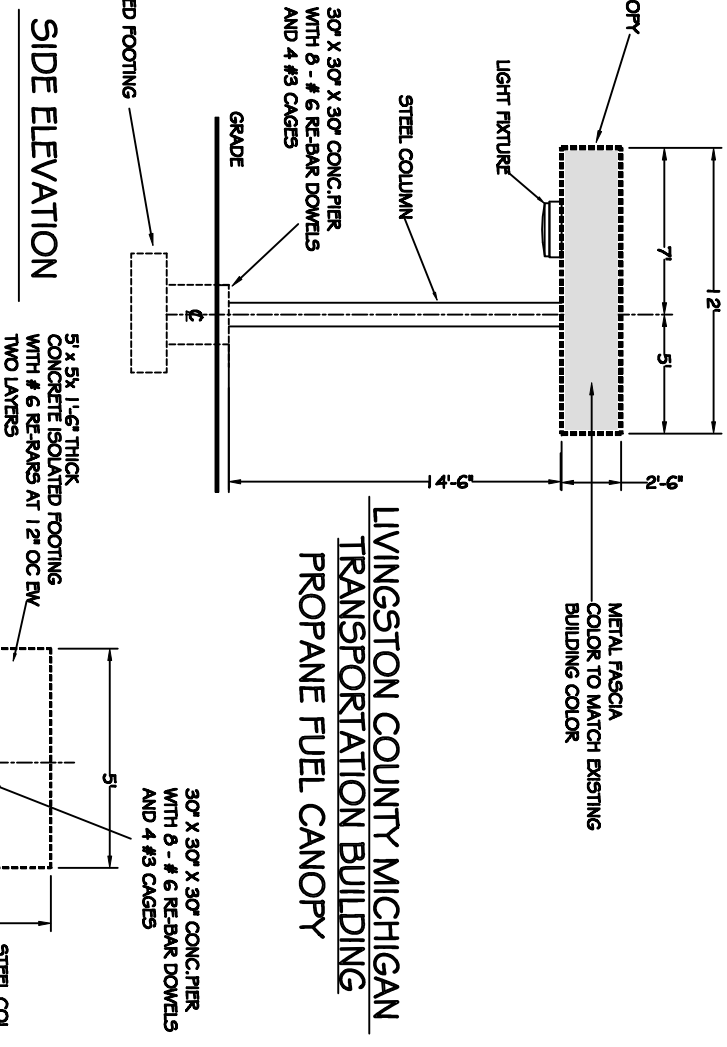
21 JULY 2020
 20 JULY 2020
 13 JULY 2020
 7 MAY 2020

METAL FASCIA
COLOR TO MATCH EXISTING
BUILDING COLOR

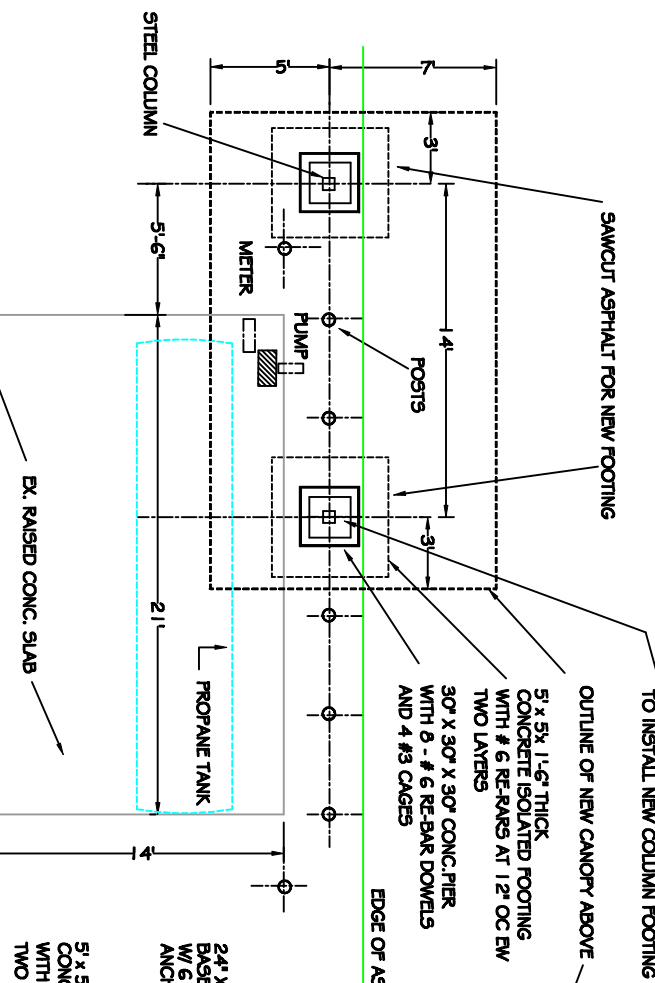


FRONT ELEVATION

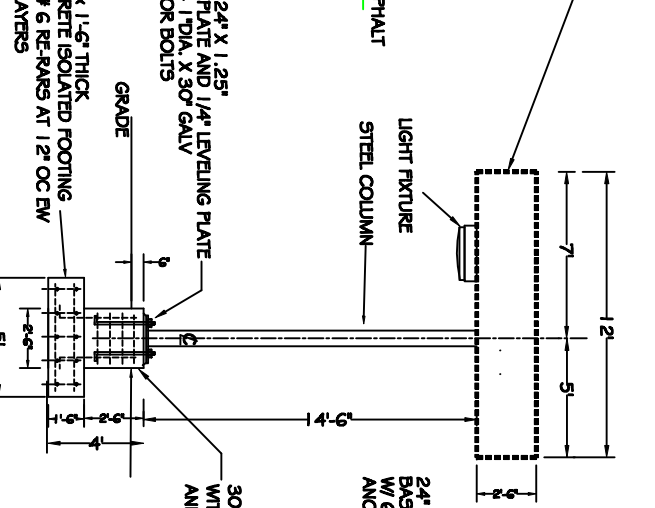
METAL FASCIA
COLOR TO MATCH EXISTING
BUILDING COLOR



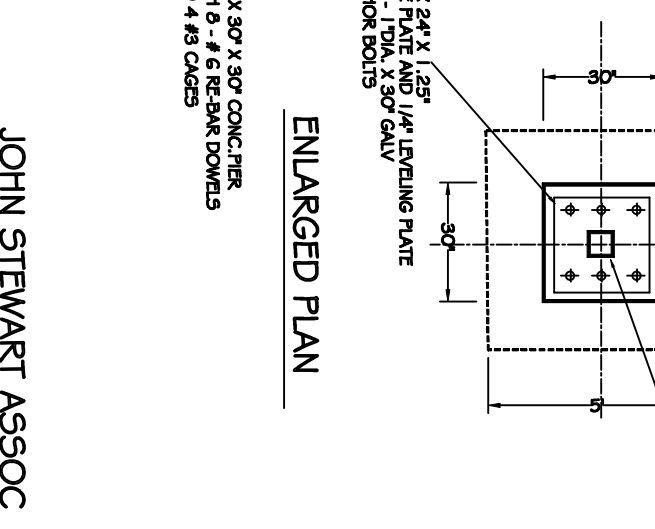
SIDE ELEVATION



CANOPY PLAN



FOUNDATION DETAIL



ENLARGED PLAN

**LIVINGSTON COUNTY MICHIGAN
TRANSPORTATION BUILDING
PROPANE FUEL CANOPY**

**JOHN STEWART ASSOC
GENERAL CONTRACTORS
(248) 390-5260
20 JULY 2020**