



ALICE[®]

Asset Limited Income Constrained Employed

2021 Report

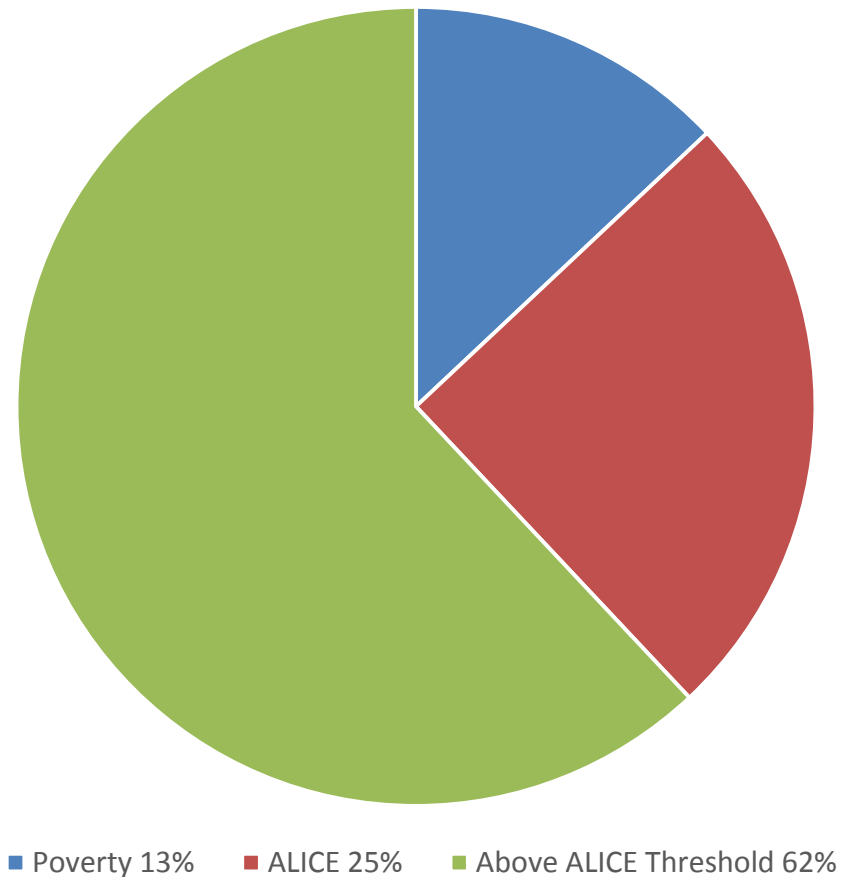


Livingston County
United Way

ALICE[®]

Asset Limited Income Constrained Employed

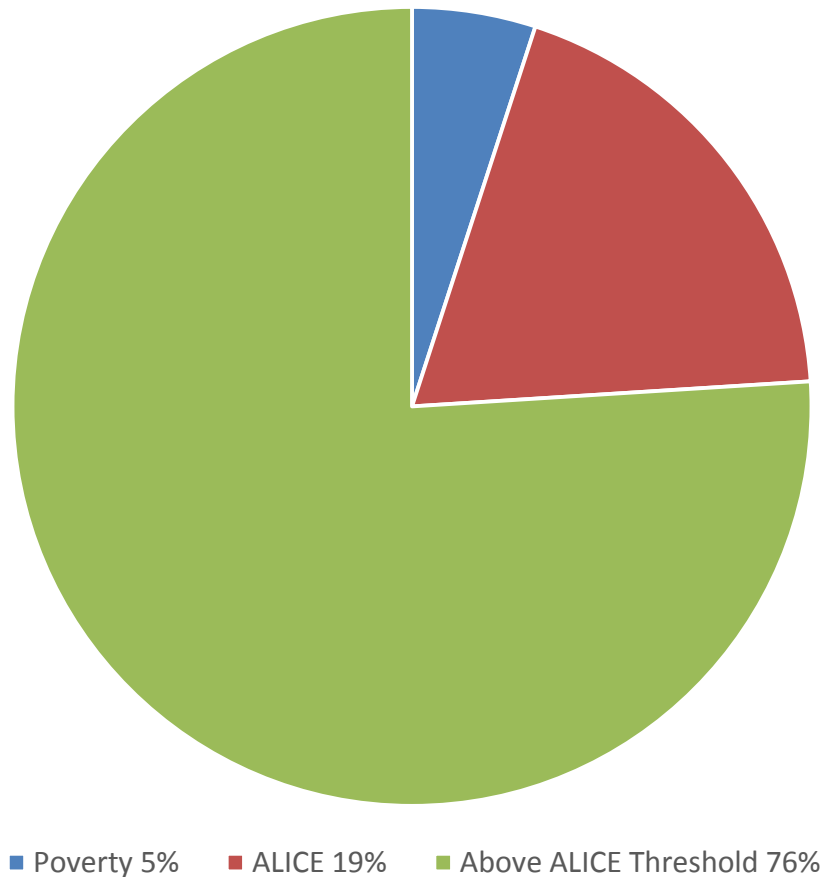
Michigan ALICE Data



ALICE[®]

Asset Limited Income Constrained Employed

Livingston ALICE Data





1 in 4
Livingston
County
Households
Struggle to
meet all
expenses.





Livingston County Survival Budgets (2021)

Single Adult	\$25,322
Single Senior	\$28,272
Family of Four (2 A, 2C)	\$59,448

Federal Poverty Level (2021)

Single Adult	\$12,880
Family of Four	\$26,500





Head Start* Eligibility

- 100% of Poverty level
- Family of four must make < \$26,500 annually to qualify.

*Head Start programs promote the school readiness of infants, toddlers, and preschool-aged children from low-income families, and are available at no cost to in Livingston County for eligible 3 and 4 year old children.



SNAP* Eligibility

- 130% of Poverty level
- Family of four must make < \$34,450 annually to qualify.

*Supplemental Nutrition Assistance Program. SNAP is a timely, targeted and temporary Federal EBT Grocery Assistance Program.

A healthcare worker in blue scrubs and glasses is smiling while attending to a patient's arm. The patient is wearing a patterned shirt and has a bandage on their arm. The healthcare worker is holding the patient's arm and appears to be applying or adjusting the bandage.

Healthy Michigan* Eligibility

- 133% of Poverty level
- Family of four must make < \$35,245 annually to qualify.

*Healthy Michigan is health care coverage for individuals 19-64 who do not qualify for Medicare.



Here comes an unexpected crisis!



Monthly Survival Budget Family of 4

Housing	\$980
Child Care	\$494
Food	\$955
Transportation	\$929
Health Care	\$569
Technology	\$75
Miscellaneous	\$450
Taxes	\$502
<hr/>	
Monthly Total	\$4,954
Annual Total	\$59,448
Hourly Wage	\$29.72



Monthly Survival Budget Family of 4

Housing	\$980
Child Care	\$494
Food	\$955
Transportation	\$929
Health Care	\$569
Technology	\$75
Miscellaneous	\$450
Taxes	\$502
<hr/>	
Monthly Total	\$4,954
Annual Total	\$59,448
Hourly Wage	\$29.72



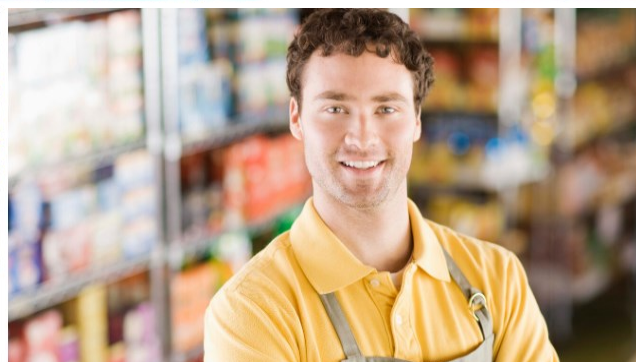
Monthly Survival Budget Family of 4

Housing	\$980
Child Care	\$494
Food	\$955
Transportation	\$929
Health Care	\$569
Technology	\$75
Miscellaneous	\$450
Taxes	\$502
<hr/>	
Monthly Total	\$4,954
Annual Total	\$59,448
Hourly Wage	\$29.72



Monthly Survival Budget Family of 4

Housing	\$980
Child Care	\$494
Food	\$955
Transportation	\$929
Health Care	\$569
Technology	\$75
Miscellaneous	\$450
Taxes	\$502
<hr/>	
Monthly Total	\$4,954
Annual Total	\$59,448
Hourly Wage	\$29.72





Monthly Survival Budget Family of 4

Housing	\$980
Child Care	\$494
Food	\$955
Transportation	\$929
Health Care	\$569
Technology	\$75
Miscellaneous	\$450
Taxes	\$502
<hr/>	
Monthly Total	\$4,954
Annual Total	\$59,448
Hourly Wage	\$29.72



Monthly Survival Budget Family of 4

Housing	\$980
Child Care	\$494
Food	\$955
Transportation	\$929
Health Care	\$569
Technology	\$75
Miscellaneous	\$450
Taxes	\$502
<hr/>	
Monthly Total	\$4,950
Annual Total	\$59,448
Hourly Wage	\$29.72

Monthly Survival Budget Family of 4

Housing	\$980
Child Care	\$494
Food	\$955
Transportation	\$929
Health Care	\$569
Technology	\$75
Miscellaneous	\$450
Taxes	\$502

Monthly Total ~~\$4,950~~
Annual Total ~~\$59,448~~
Hourly Wage ~~\$29.72~~

Monthly Survival Budget Family of 4

Housing	\$980
Child Care	\$494
Food	\$955
Transportation	\$929
Health Care	\$569
Technology	\$75
Miscellaneous	\$450
Taxes	\$502

Monthly Total \$3,334
Annual Total \$40,000
Hourly Wage \$20.00

— \$19,448

ALICE[®]

Asset Limited Income Constrained Employed

After you have made a decision (A, B or C), subtract 1 point for A, 2 points for B, 3 points for C

Weekly Budget

- 20 points total
- Answers are worth between 1-3 points

ALICE[®]

Asset Limited Income Constrained Employed

After you have made a decision (A, B or C), subtract 1 point for A, 2 points for B, 3 points for C

Who are you?

- Married
- Two Daughters aged 8 and 4
- Caring for an aging parent who lives with you
- You and your spouse both work. One works full-time while one has two part-time jobs.



A

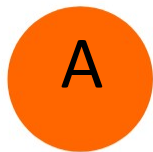
1 bed 1 bath apartment, no patio/yard, street parking,

B

2 bed 1 bath apartment, covered patio, 1 covered parking spot, stove and refrigerator

C

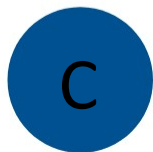
3 bed 1.5 bath house, small yard, 2 car garage, stove, refrigerator and dishwasher



Walk, bike or take public transportation



Family owns 1 car



Family owns 2 cars



A

**Child goes home after
school with no supervision**

B

**Child attends a 3-day/week
after school program
where they work on
homework or play outside**

C

**Child attends a 5-day/week
after school program with
educational activities**



A

Child is watched by a neighbor

B

Child attends a child care program that is not accredited and offers limited stimulation

C

Child attends a quality child care program offers early learning components



A

Meals and snacks that are low-cost, made up primarily of shelf-stable foods.

B

Mixed meals and snacks; some choices are low-cost, shelf-stable and others include lean meats, fresh fruits and vegetables.

C

Meals and snacks consisting primarily of nutritious lean meats, fresh fruits and vegetables. Specialty diets for those who require it.



A

Senior parent is left at home in an at-risk situation during the week

B

3-day/week of care services delivered to the home and occasional caregiver respite

C

5 days/week of adult day care at facility that provides transportation, nurses and group activities



A

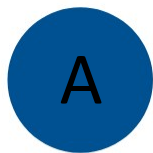
No health insurance, you pay all health related costs

B

Health insurance for you through your employer, but none for your family members

C

Health insurance for you and your family through your employer



No money left after the bills are paid



\$20 left over each week after all bills are paid



\$50 left over each week after all bills are paid



Here comes an unexpected crisis!

The family car
breaks down.

Minus Three Points

The price of gas
doubles

Minus Three Points

Your spouse loses one
of their part-time jobs

Minus Three Points

Your daughter grew two
inches & needs new
clothes

Minus Three Points



Livingston County
United Way

ALICE[®]

Asset Limited Income Constrained Employed

Full 2021 ALICE Report:

<https://lcunitedway.org/wp-content/uploads/2021/03/2021ALICEReport.pdf>

Methodology:

file:///C:/Users/LIZ/Downloads/2020ALICE_Methodology_FIN_AL.pdf

ALICE Research Center:

<http://neupro.com/county-profiles/michigan>

For presentations to board /leadership groups:

lwelch@lcunitedway.org

