

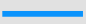
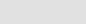
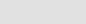


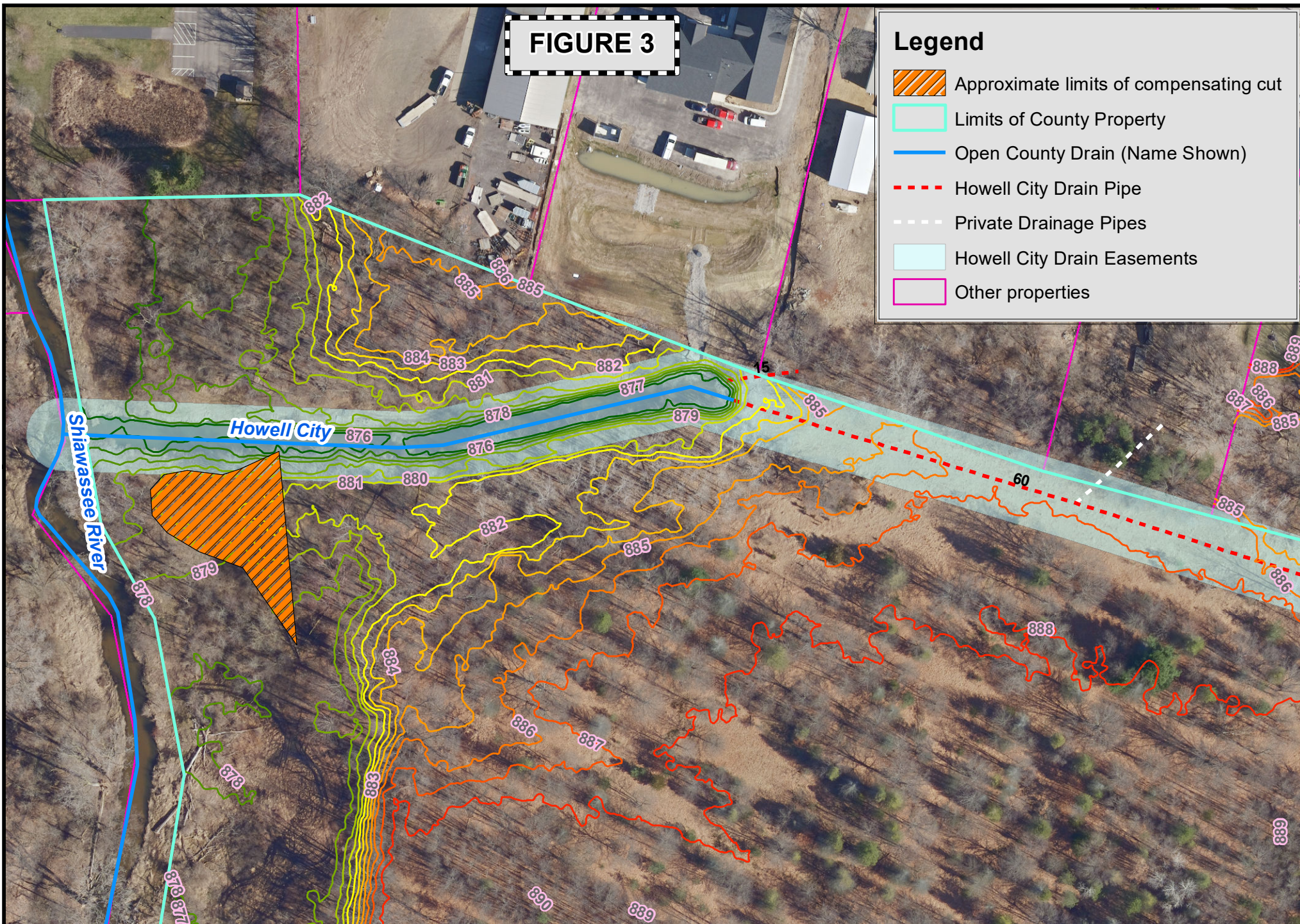


FIGURE 3

Legend

-  Approximate limits of compensating cut
-  Limits of County Property
-  Open County Drain (Name Shown)
-  Howell City Drain Pipe
-  Private Drainage Pipes
-  Howell City Drain Easements
-  Other properties



Livingston County Drain Commissioner
2300 E Grand River
Howell, MI. 48843
Orthophoto Flown 2020
Printed August 1, 2022

Part of the Howell City & Shiawassee River Drain
Part of Sec. 1, T2N, R4E



1 inch = 100 feet