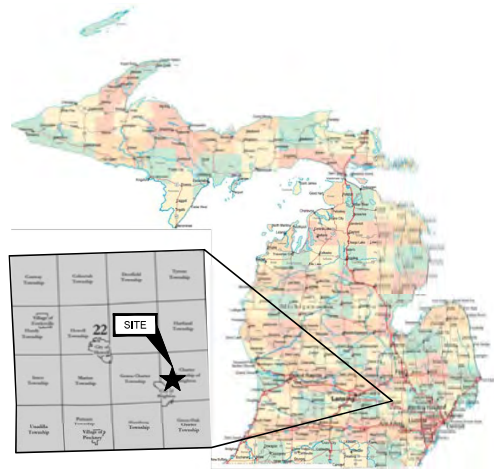
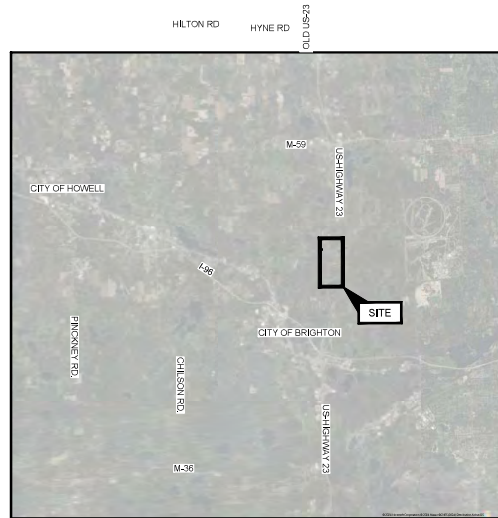


BRIAN JONCKHEERE
LIVINGSTON COUNTY DRAIN COMMISSIONER
BRIGHTON NO. 4 DRAIN IMPROVEMENTS
PART OF SECTIONS 8, 9, 16, & 17, BRIGHTON TWP, T2N, R6E
LIVINGSTON COUNTY, MICHIGAN



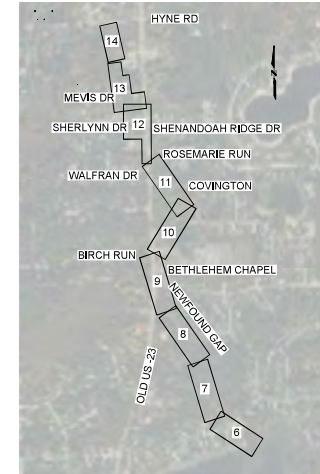
SOURCE:
STATE MAP: WWW.MICHIGANMAP.ORG
COUNTY MAP: WWW.MILVCOUNTY.GOV/GIS/MAP-GALLERY/

STATE AND LIVINGSTON COUNTY MAP
(NOT TO SCALE)



SOURCE:
BING MAPS

SITE LOCATION MAP
(NOT TO SCALE)



PLAN INDEX

SHEET INDEX

SHEET NO.	DRAWING NO.	TITLE
1	01-G-01	COVER
2	01-G-02	GENERAL NOTES
3	01-G-03	SESC OVERVIEW
4	01-G-04	SESC DETAILS
5	01-G-05	TRAFFIC CONTROL
6	02-C-01	PLAN & PROFILE STA 0+00 - 10+00
7	02-C-02	PLAN & PROFILE STA 10+00 - 20+00
8	02-C-03	PLAN & PROFILE STA 20+00 - 30+00
9	02-C-04	PLAN & PROFILE STA 30+00 - 40+00
10	02-C-05	PLAN & PROFILE STA 40+00 - 50+00
11	02-C-06	PLAN & PROFILE STA 50+00 - 60+00
12	02-C-07	PLAN & PROFILE STA 60+00 - 70+00
13	02-C-08	PLAN & PROFILE STA 70+00 - 80+00
14	02-C-09	PLAN & PROFILE STA 80+00 - 90+00
15	99-D-01	DETAILS
16	99-D-02	DETAILS

PRELIMINARY

DRAFT				DWG. NO.
				01-G-01
				SHEET NO.
0	DATE	ISSUE/REVISION	APP	1 OF 15

PREPARED FOR: LIVINGSTON COUNTY DRAIN COMMISSIONER
2300 E. GRAND RIVER AVE., STE 105
HOWELL, MI 48843
(517)-546-0040

PREPARED BY: GEI CONSULTANTS OF MICHIGAN, P.C.
401 S WASHINGTON SQUARE
SUITE 103
LANSING, MI 48933
(517)803-4600



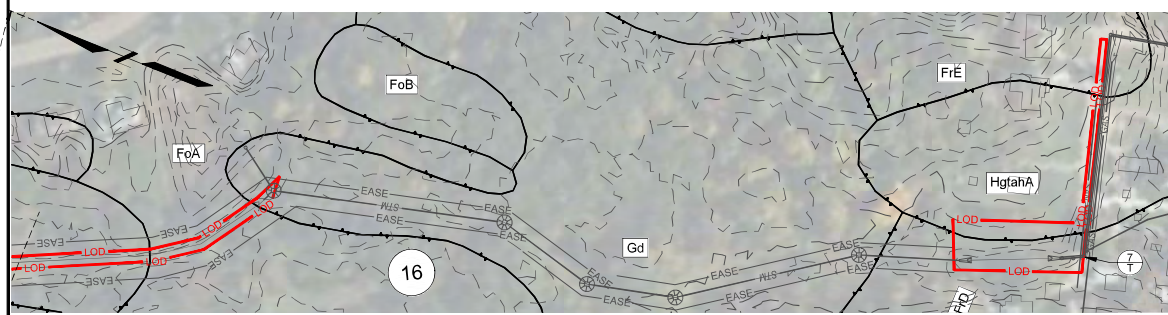
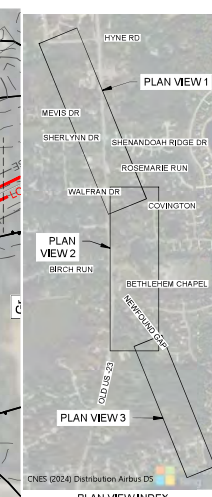
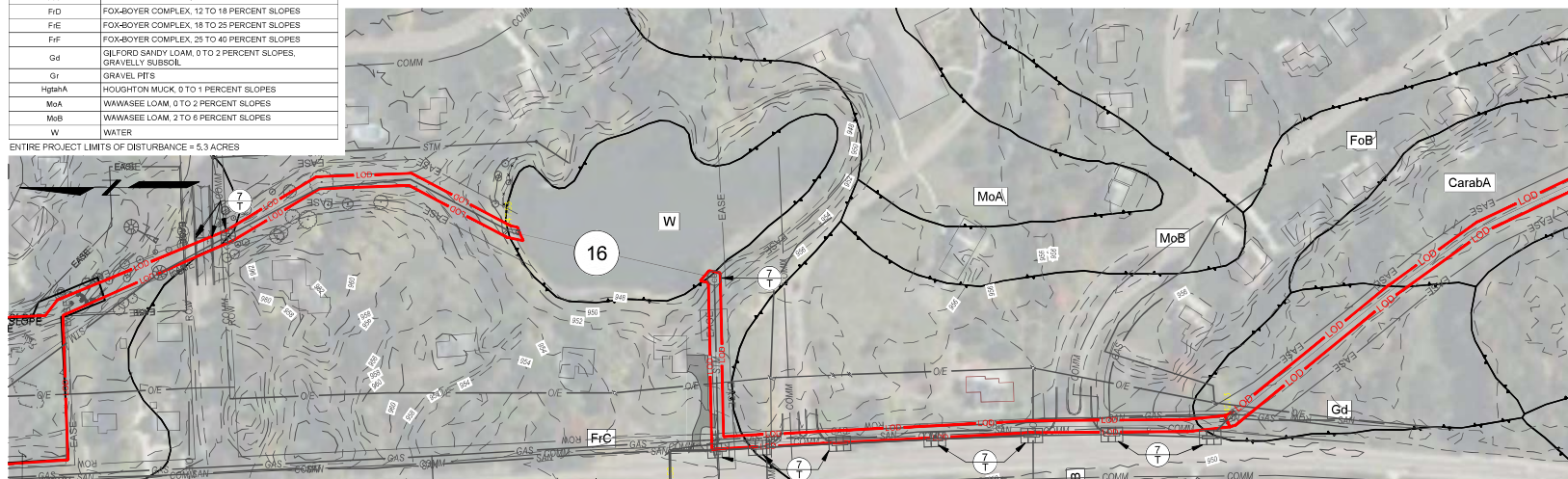
GEI PROJECT NO. 2000946



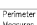
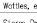
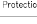



THIS DOCUMENT, AND THE IDEAS AND DESIGNS INCORPORATED HEREIN, IS AN INSTRUMENT OF PROFESSIONAL SERVICE, IS THE PROPERTY OF GEI CONSULTANTS AND IS NOT TO BE USED, IN WHOLE OR IN PART, FOR ANY OTHER PROJECT WITHOUT THE WRITTEN AUTHORIZATION OF GEI CONSULTANTS.

g:\geiconsults\8\Working\Livingston County Drain Commissioner\2000946 Brighton No 4 Drain\01-CAD\Design\sheet\2000946_Brighton_Cover.dwg - 4/23/2024



ENTIRE PROJECT LIMITS OF DISTURBANCE = 5.3 ACRES



KEY	SEIC MEASURE	SYMBOL	WHERE USED
1	Seeding		After fire or erosion, to prepare a permanent, to grow from the seed or to restore the site. Also, grass, alfalfa and clover, dandelion, clover and other plants for erosion control.
2	Mulch		On fire lines, slopes, erosion breaks and pathways, erosion ditches and other, to prevent erosion. Also, to prevent erosion on slopes and in other areas.
3	Perimeter Sediment Control Measures (Silt Fence, Straw Wattles, etc.)		As a temporary measure used to capture sediment from storm flow. May also trap small volumes of debris to protect outlets.
7	Storm Drain Inlet Protection		Around the entrance to a catch basin or an inlet that will capture runoff from an earth change activity.
10	Silt Binding Parameters		Over exposed soil surfaces or prepared seed beds that need protection from precipitation impact. Should be installed prior to erosion for erosion control.
11	Riprap		Along drain banks, shorelines, or where concentrated flows occur. Slows velocity, reduces erosion and sediment load.
26	Dust Control		As a temporary measure on exposed or destabilized areas that must be protected from wind or water erosion.
39	Dewatering/Grout Pumping		When construction or maintenance activities are limited by the presence of water and a dry work area is required.

	PROPERTY LINES
	EASEMENT
	ROAD RIGHT OF WAY
	CONTOUR INTERVAL (2 FOOT)
	INDEX INTERVAL (10 FOOT)
	SOIL TYPE
	PROPOSED STORM SEWER
	PROPOSED RIPRAP
	LIMITS OF DISTURBANCE
	SP

Preliminary



**LIVINGSTON COUNTY DRAIN
COMMISSION**

P.E. No.:	5547
Approved:	BPS_NAMEC
Checked:	BJK_BY
Drawn:	DEWINBY
Designed:	DSM_BY
GEI Project	2000946

If this scale bar does not measure 1" then drawing is not original scale.

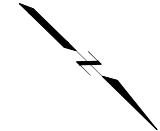
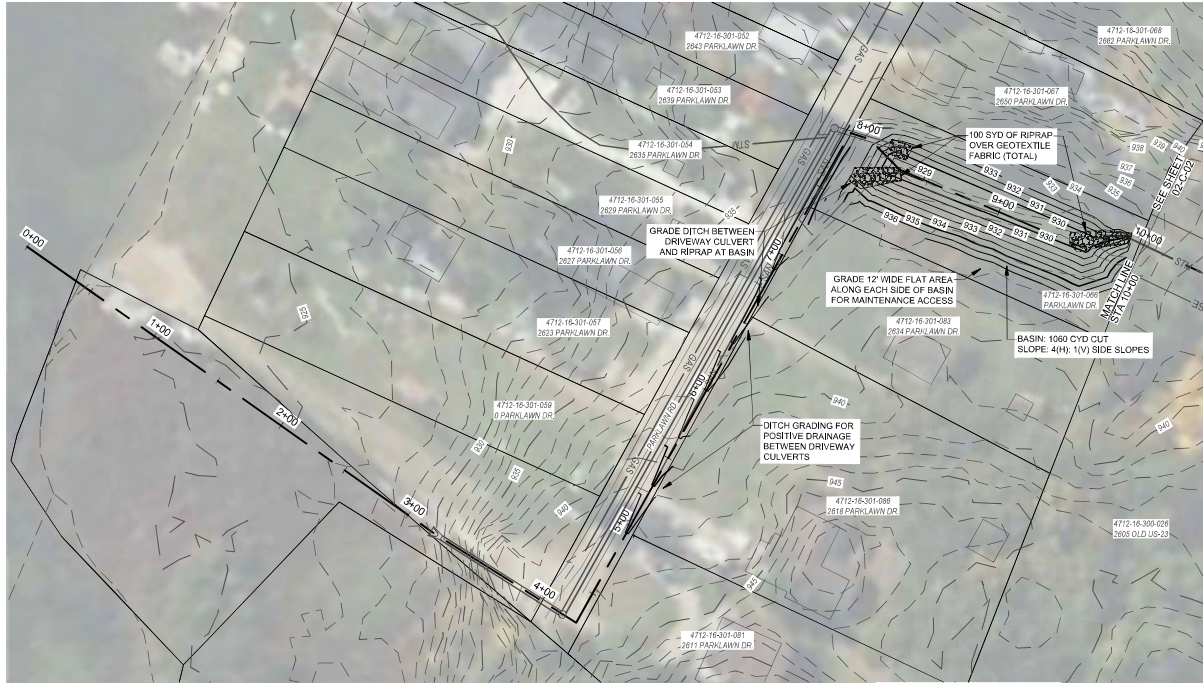
[illegible]

SHEET NAME	
------------	--

OT) SESC OVERVIEW

DWG NO.
01-G-03

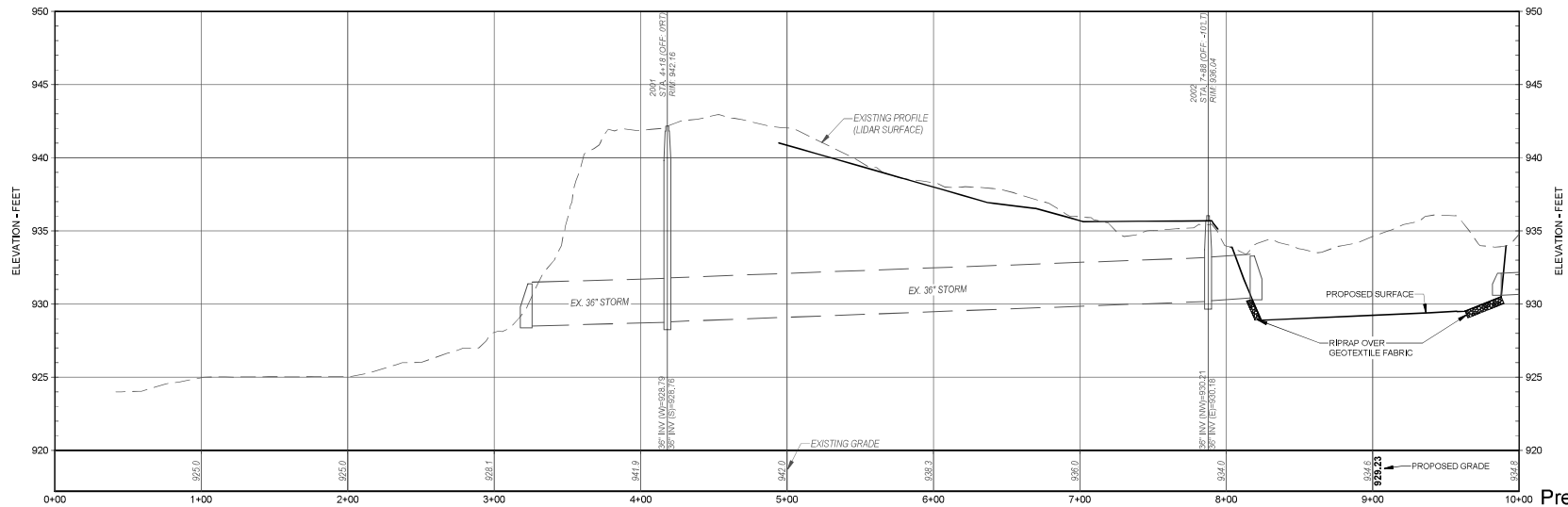
SHEET NO.
3 OF 15



HORIZONTAL SCALE, FEET
0 40 80
VERTICAL SCALE, FEET
0 4 8
NOTE: 10X VERTICAL EXAGGERATION



PLAN INDEX



Preliminary



LIVINGSTON COUNTY DRAIN COMMISSIONER

BRIGHTON NO. 4 DRAIN
A PART OF SECTIONS 8, 9, 16, AND 17 BRIGHTON TWP,
T2N, R6E, LIVINGSTON COUNTY MICHIGAN

P.E. No.: 53847
Approved: BJC
Checked: BJC
Drawn: MJWLCM
Designed: LCM
GEI Project: 2000946

Attention: 1"
If this scale bar does not measure 1" then drawing is not original scale.

NO.	DATE	ISSUE/REVISION	APP

SHEET NAME

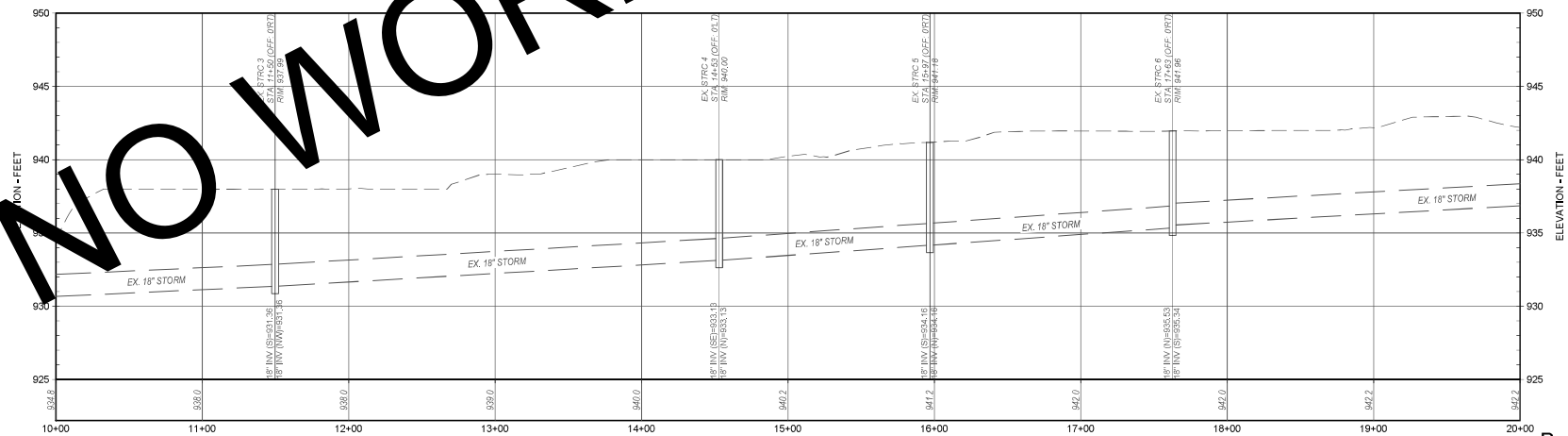
PLAN & PROFILE
STA 0+00 - 10+00

DWG NO.
02-C-01

SHEET NO.
6 OF 15



HORIZONTAL SCALE, FEET
0 40 80
VERTICAL SCALE, FEET
0 4 8
NOTE: 10X VERTICAL EXAGGERATION



LIVINGSTON COUNTY DRAIN COMMISSIONER
BRIGHTON NO. 4 DRAIN
A PART OF SECTIONS 8, 9, 16, AND 17 BRIGHTON TWP.,
T2N, R6E, LIVINGSTON COUNTY MICHIGAN

P.E. No.:	53847
Approved:	BJC
Checked:	BJC
Drawn:	MJW/LCM
Designed:	LCM
GEI Project	2000946
Attention:	1"
If this scale bar does not measure 1" then drawing is not original scale.	
NO.	DATE
ISSUE/REVISION	APP

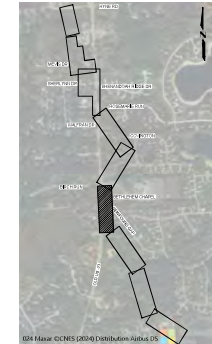
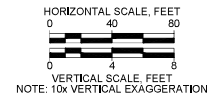
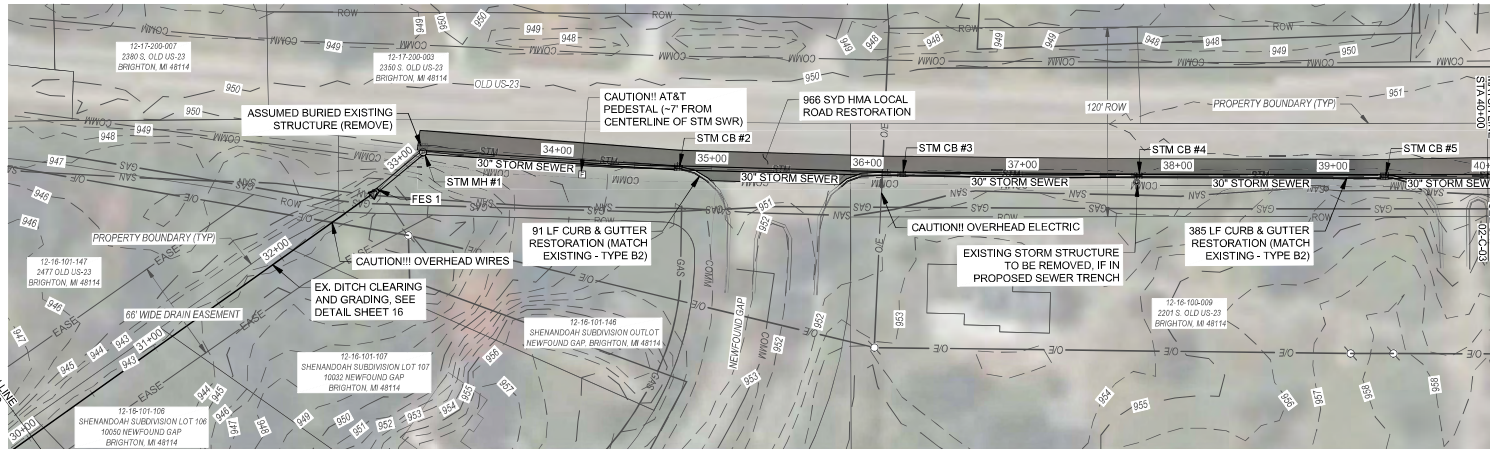
PLAN & PROFILE
STA 10+00 - 20+00

DWG NO.
02-C-02

SHEET NO.
7 OF 15

Preliminary

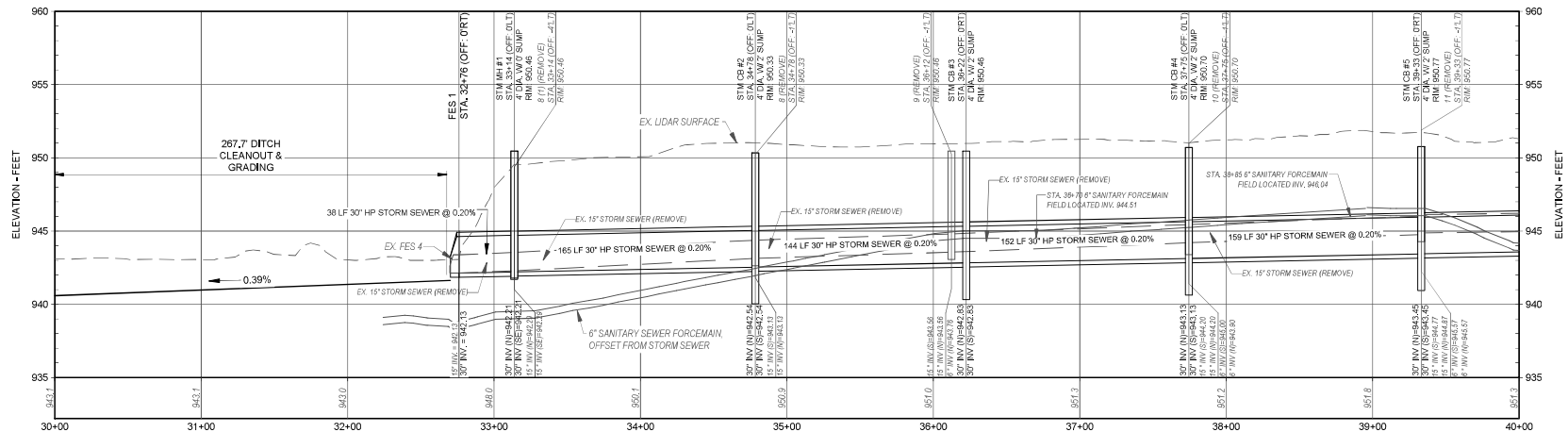
NEED UNDERDRAIN STILL FIELD VERIFY TELEPHONE POLE AT STA. 33+00



NOTE: EXPOSE EX. UTILITIES PRIOR TO INSTALLATION OF STORM SEWER THIS SHEET. NOTIFY ENGINEER IF ANY CONFLICTS EXIST.

- CONSTRUCTION NOTES:**
1. NO STORAGE OF SPOILS OR MATERIALS WITHIN RIGHT OF WAY OF ANY ROAD WITHIN LIMITS OF PROJECT
 2. MAINTAIN ACCESS FOR ALL HOMEOWNERS AT ALL TIMES
 3. RESTORE ALL SIGNS & MAILBOXES TO LOCATIONS AS NEAR POSSIBLE TO EXISTING LOCATION AFTER COMPLETION OF WORK. CONSIDERED INCIDENTAL TO CONSTRUCTION
 4. ROAD SHALL BE PASSABLE AND HAVE ONE LANE OPEN AT ALL TIMES AT THE END OF EACH WORK DAY. CONTRACTOR SHALL PROVIDE TEMPORARY PIPE OR OTHER CONNECTION APPROVED BY ENGINEER, TO PROVIDE STORM SEWER FLOW AT ALL TIMES. ALL STORM INLETS SHALL BE SECURED SO NO SEDIMENT MAY ENTER STORM SEWER SYSTEM.

APPROXIMATE STORM SEWER REMOVAL THIS SHEET (CONTRACTOR TO VERIFY) STRUCTURES: 6 15\"/>



LIVINGSTON COUNTY DRAIN COMMISSIONER
BRIGHTON NO. 4 DRAIN
A PART OF SECTIONS 8, 9, 16, AND 17 BRIGHTON TWP.
T2N, R6E, LIVINGSTON COUNTY MICHIGAN

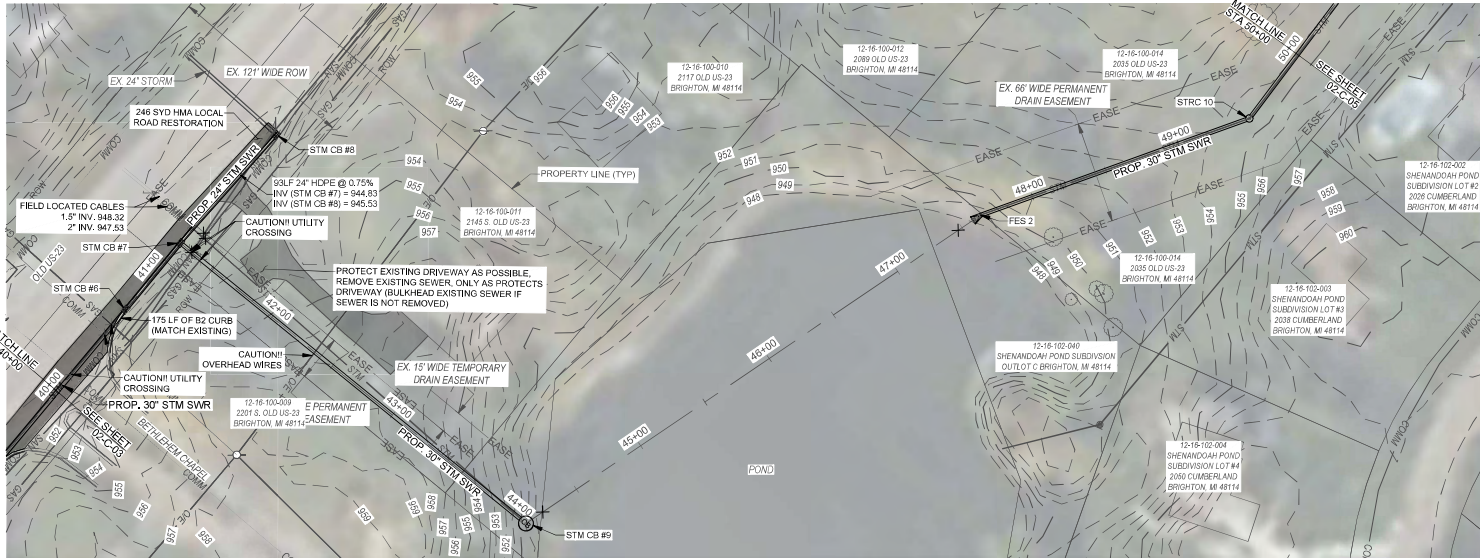
P.E. No.:	53847
Approved:	BJC
Checked:	BJC
Drawn:	MJWL/CM
Designed:	LCM
GEI Project:	2000946
0	Attention: 1"
If this scale bar does not measure 1" then drawing is not original scale.	
NO.	DATE
ISSUE/REVISION	
APP	
SHEET NAME	

PLAN & PROFILE
STA 30+00 - 40+00

DWG NO.
02-C-04

SHEET NO.
9 OF 15

Preliminary

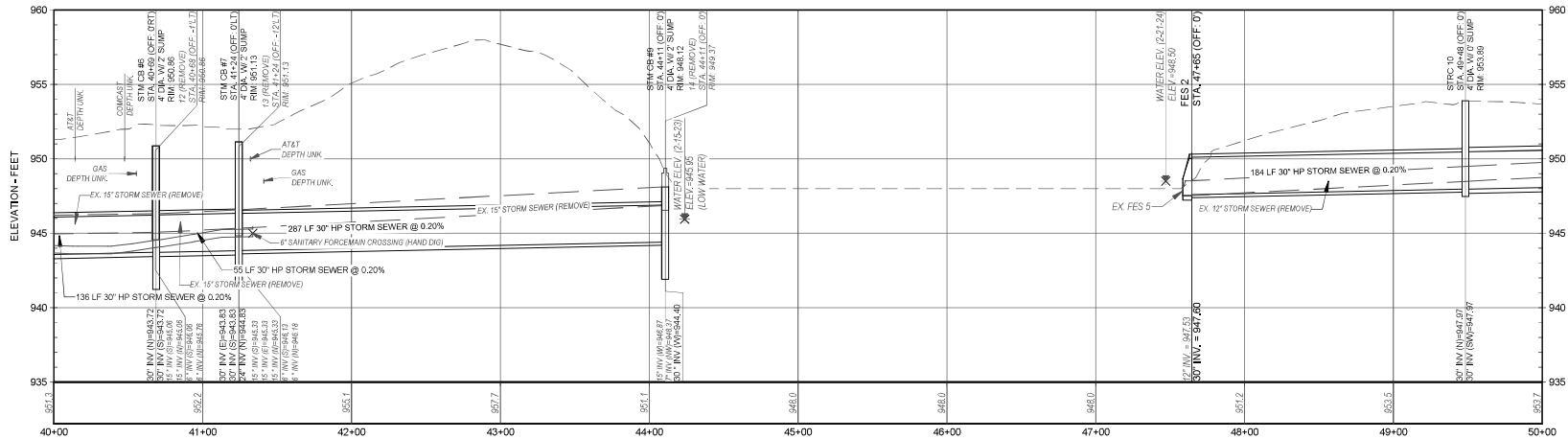


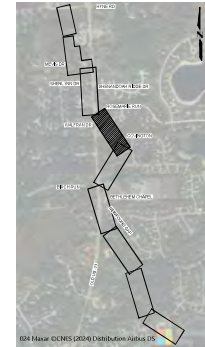
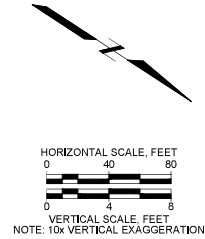
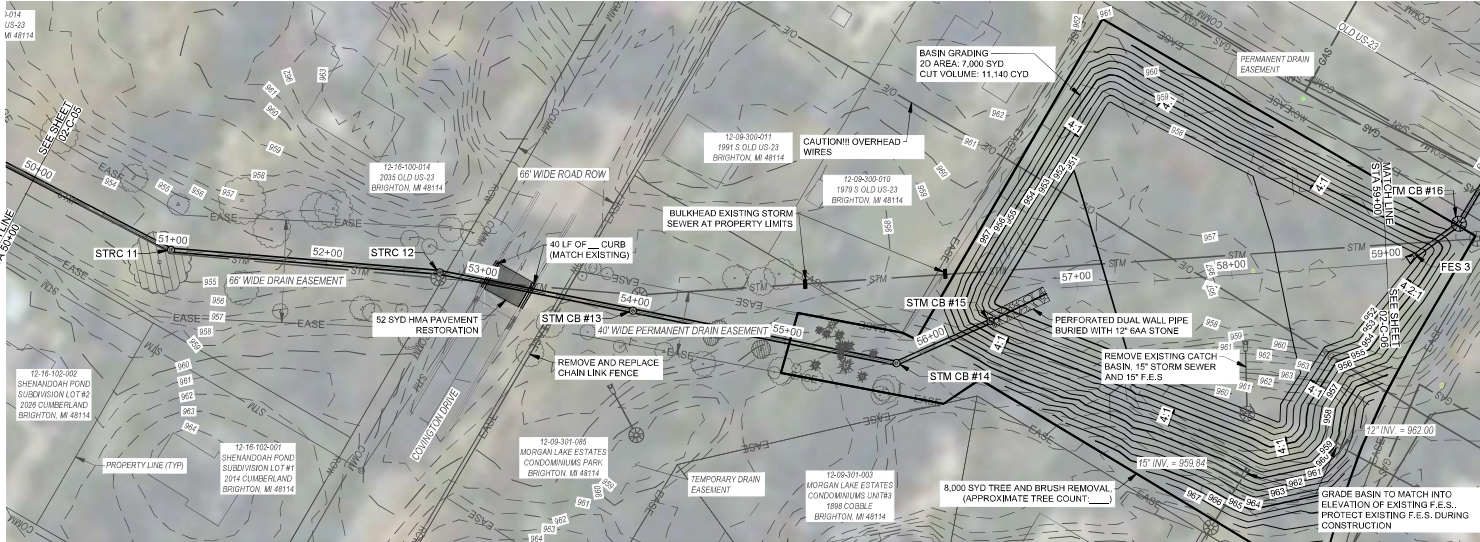
CONSTRUCTION NOTES:

1. NO STORAGE OF SPOILS OR MATERIALS WITHIN RIGHT OF WAY OF ANY ROAD WITHIN LIMITS OF PROJECT
2. MAINTAIN ACCESS FOR ALL HOMEOWNERS AT ALL TIMES
3. RESTORE ALL SIGNS & MAILBOXES TO LOCATIONS AS NEAR POSSIBLE TO EXISTING LOCATION AFTER COMPLETION OF WORK, CONSIDERED INCIDENTAL TO CONSTRUCTION
4. ROAD SHALL BE PASSABLE AND HAVE ONE LANE OPEN AT ALL TIMES
5. AT THE END OF EACH WORK DAY, CONTRACTOR SHALL PROVIDE TEMPORARY PIPE OR OTHER CONNECTION APPROVED BY ENGINEER, TO PROVIDE STORM SEWER FLOW AT ALL TIMES, ALL STORM INLETS SHALL BE SECURED SO NO SEDIMENT MAY ENTER STORM SEWER SYSTEM,

APPROXIMATE STORM SEWER REMOVAL
THIS SHEET (CONTRACTOR TO VERIFY)
STRUCTURES: 4
15' RCP: 504 LF
12' RCP: 245 LF

VERIFY WITH LIVINGSTON ABOUT REPLACING FROM 7-8

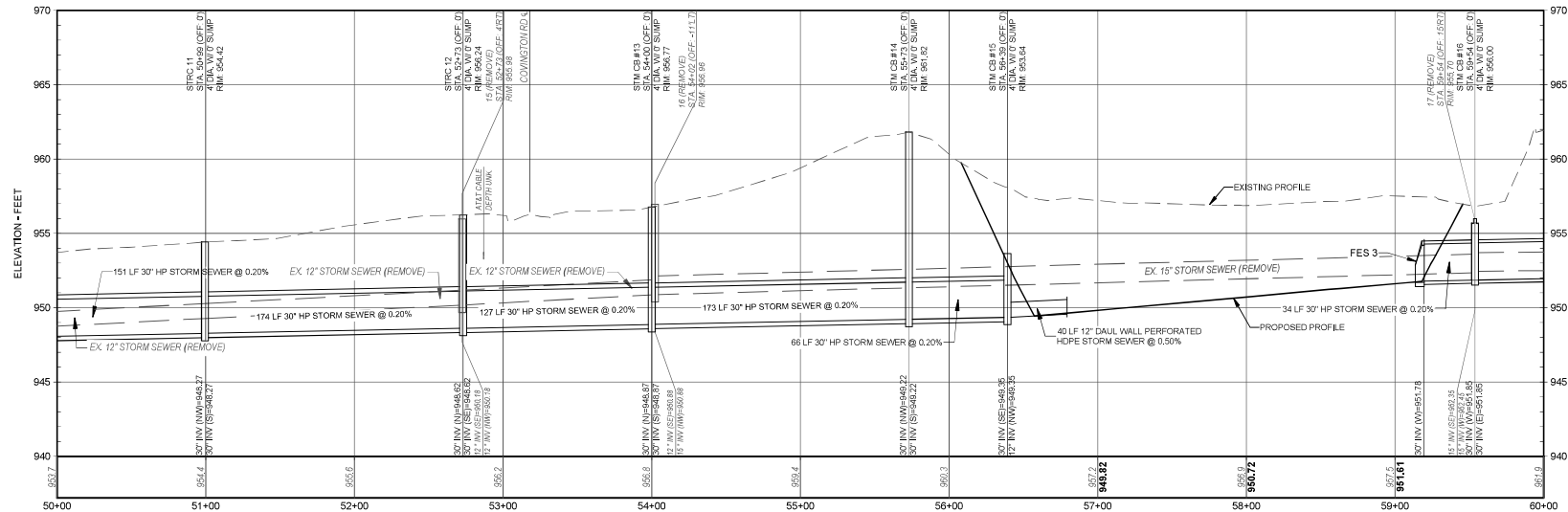




- NOTE: EXPOSE EX. UTILITIES PRIOR TO INSTALLATION OF STORM SEWER THIS SHEET. NOTIFY ENGINEER IF ANY CONFLICTS EXIST.
- CONSTRUCTION NOTES:
1. NO STORAGE OF SPOILS OR MATERIALS WITHIN RIGHT OF WAY OF ANY ROAD WITHIN LIMITS OF PROJECT
 2. MAINTAIN ACCESS FOR ALL HOMEOWNERS AT ALL TIMES
 3. RESTORE ALL SIGNS & MAILBOXES TO LOCATIONS AS NEAR POSSIBLE TO EXISTING LOCATION AFTER COMPLETION OF WORK. CONSIDERED INCIDENTAL TO CONSTRUCTION
 4. ROAD SHALL BE PASSABLE AND HAVE ONE LANE OPEN AT ALL TIMES
 5. AT THE END OF EACH WORK DAY, CONTRACTOR SHALL PROVIDE TEMPORARY PIPE OR OTHER CONNECTION APPROVED BY ENGINEER, TO PROVIDE STORM SEWER FLOW AT ALL TIMES. ALL STORM INLETS SHALL BE SECURED SO NO SEDIMENT MAY ENTER STORM SEWER SYSTEM.

TREE BRUSH REMOVAL:
8,000 SYD VEGETATION REMOVAL IN BASIN AREA
TREE REMOVAL THIS SHEET OUTSIDE OF VEGETATION REMOVAL LIMITS
6" - 12": 3
13" - 24": 0
25" OR GREATER: 1

APPROXIMATE STORM SEWER REMOVAL
THIS SHEET (CONTRACTOR TO VERIFY)
STRUCTURES: 3
15" INV: 924 LF (VERIFY PIPE SIZE)
FES: 1



PLAN INDEX

380 CONSULTANTS OF MICHIGAN, P.C.
401 S. WASHINGTON SQUARE
SUITE 103
LANSING, MI 48203
(313) 655-4800

LIVINGSTON COUNTY DRAIN COMMISSIONER
COMMISSIONER
BRIGHTON NO. 4 DRAIN
A PART OF SECTIONS 8, 9, 16, AND 17 BRIGHTON TWP.
T2N, R6E, LIVINGSTON COUNTY MICHIGAN

P.E. No.: 53847
Approved: BJC
Checked: BJC
Drawn: MJWLCM
Designed: LCM
GEI Project: 2000946

0 1" Attention: 1"

If this scale bar does not measure 1" then drawing is not original scale.

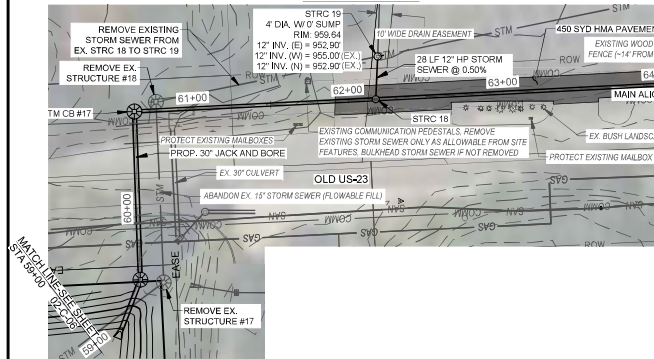
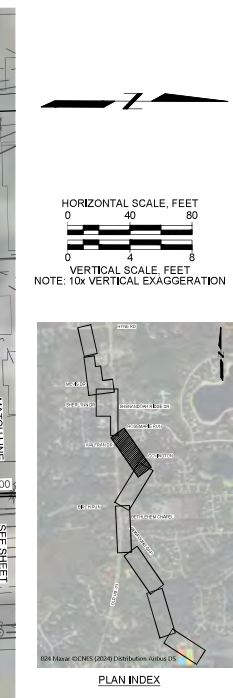
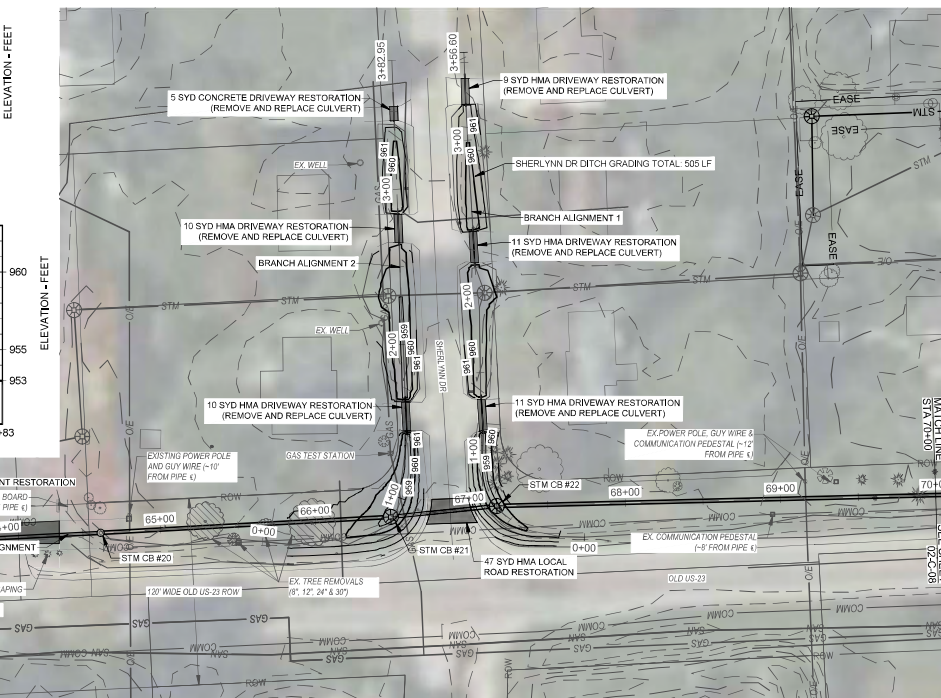
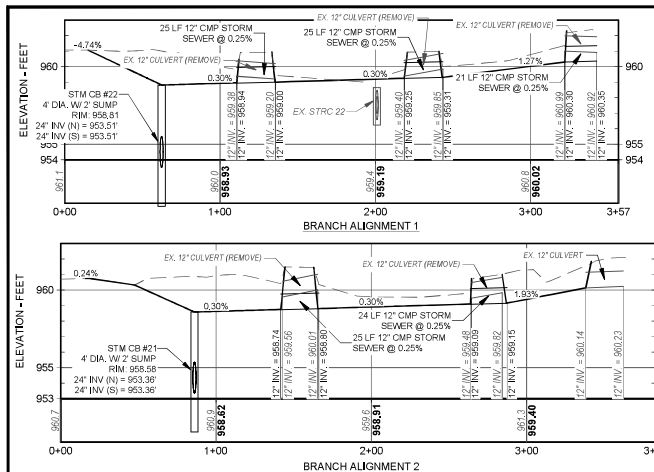
NO.	DATE	ISSUE/REVISION	APP.

SHEET NAME

PLAN & PROFILE
STA 50+00 - 60+00

DWG NO.
02-C-06

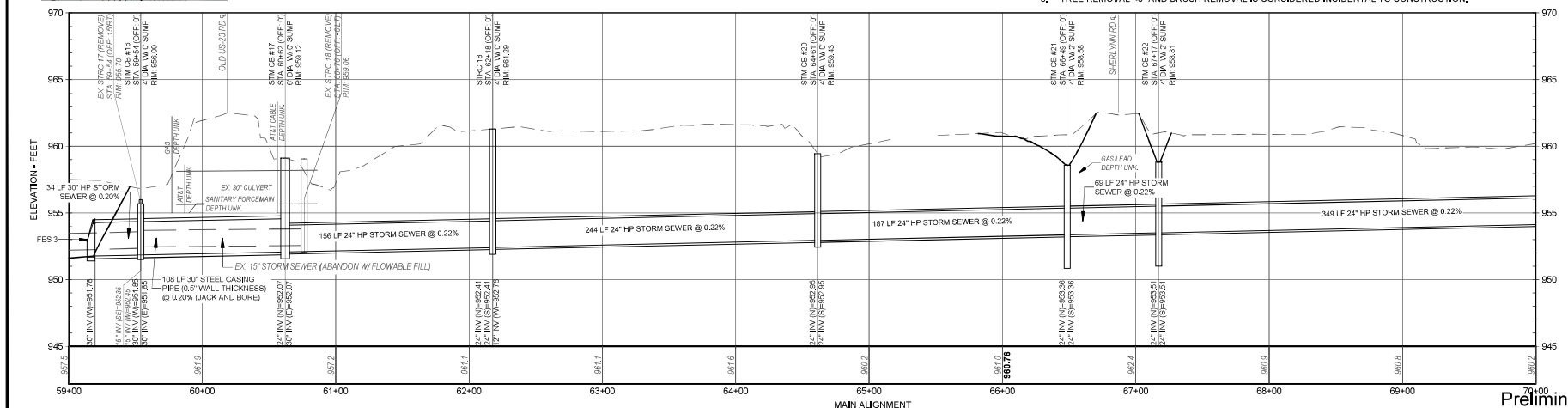
SHEET NO.
11 OF 15



APPROXIMATE STORM SEWER REMOVAL
THIS SHEET (CONTRACTOR TO VERIFY)
STRUCTURES: 2
15\"/>

NOTE: EXPOSE EX UTILITIES PRIOR
TO INSTALLATION OF STORM SEWER
THIS SHEET, NOTIFY ENGINEER IF
ANY CONFLICTS EXIST.

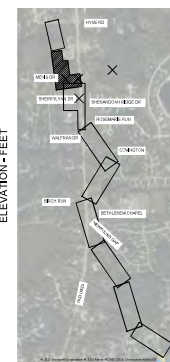
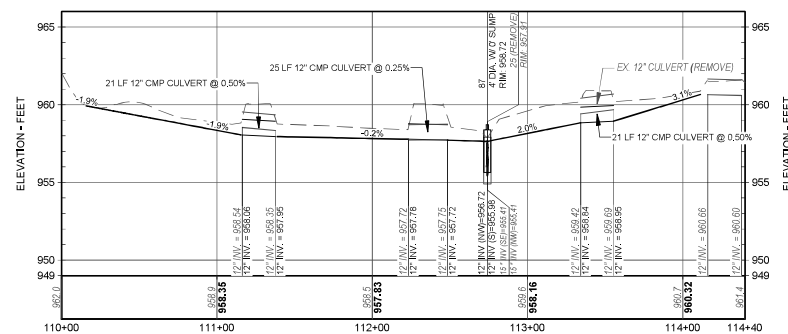
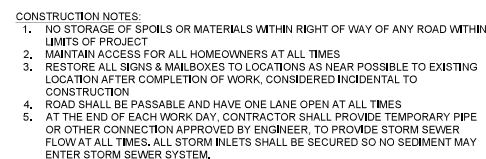
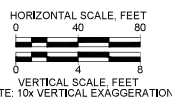
- CONSTRUCTION NOTES:
1. NO STORAGE OF SPOILS OR MATERIALS WITHIN RIGHT OF WAY OF ANY ROAD WITHIN LIMITS OF PROJECT
 2. MAINTAIN ACCESS FOR ALL HOMEOWNERS AT ALL TIMES
 3. RESTORE ALL SIGNS & MAILBOXES TO LOCATIONS AS NEAR POSSIBLE TO EXISTING LOCATION AFTER COMPLETION OF WORK. CONSIDERED INCIDENTAL TO CONSTRUCTION
 4. AT THE END OF EACH WORK DAY, CONTRACTOR SHALL PROVIDE TEMPORARY PIPE OR OTHER CONNECTION APPROVED BY ENGINEER, TO PROVIDE STORM SEWER FLOW AT ALL TIMES, ALL STORM INLETS SHALL BE SECURED SO NO SEDIMENT MAY ENTER STORM SEWER SYSTEM.
 5. TREE REMOVAL <6\"/>



P.E. No.: 53847			
Approved: BJC			
Checked: BJC			
Drawn: MJWLCM			
Designed: LCM			
GEI Project: 2000946			
Attention: 1"			
If this scale bar does not measure 1" then drawing is not original scale.			
NO.	DATE	ISSUE/REVISION	APP.
SHEET NAME			
PLAN & PROFILE STA 60+00 - 70+00			
DWG NO. 02-C-07			
SHEET NO. 12 OF 15			



LIVINGSTON COUNTY DRAIN COMMISSIONER
BRIGHTON NO. 4 DRAIN
A PART OF SECTIONS 8, 9, 16, AND 17 BRIGHTON TWP.,
T2N, R6E, LIVINGSTON COUNTY MICHIGAN



Preliminary



LIVINGSTON COUNTY DRAIN
COMMISSIONER

BRIGHTON NO. 4 DRAIN
A PART OF SECTIONS 8, 9, 16, AND 17 BRIGHTON TWP,
T2N, R6E, LIVINGSTON COUNTY MICHIGAN

P.E. No.: 53847

Approved: BJC

Checked: BJC

Drawn: MJW/LCM

Designed: LCN

GEI Project	2000
-------------	------

Attention:

If this scale bar does not m

then drawing is not origin		

--	--	--

--	--	--

--	--	--

0		
---	--	--

NO.	DATE	ISSUE/REV
-----	------	-----------

No.	DATE	ISSUED BY
SHEET NAME		

SHEET NAME

1000

1000

[illegible]

PLAN & PROM

STA 70+00 - 8

100

1000

1000

DIAIG NO.

DWG NO.

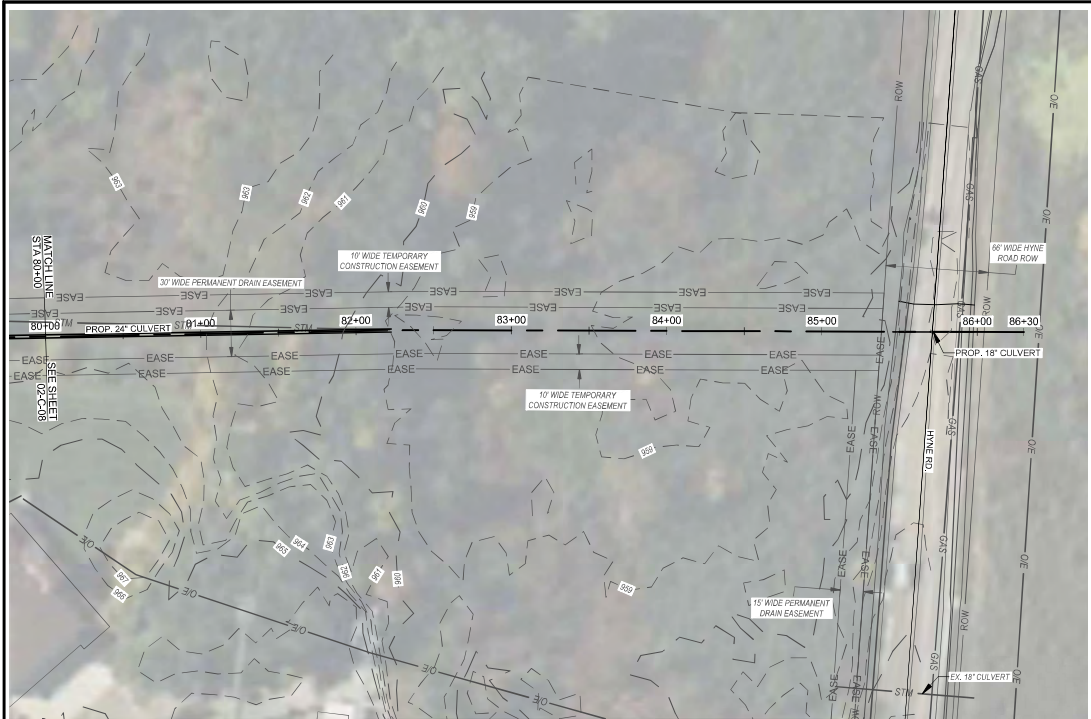
02-C-08

02-C-00

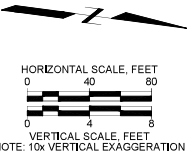
SHEET NO.

SHEET NO. 105

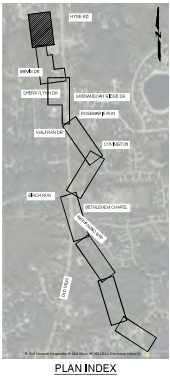
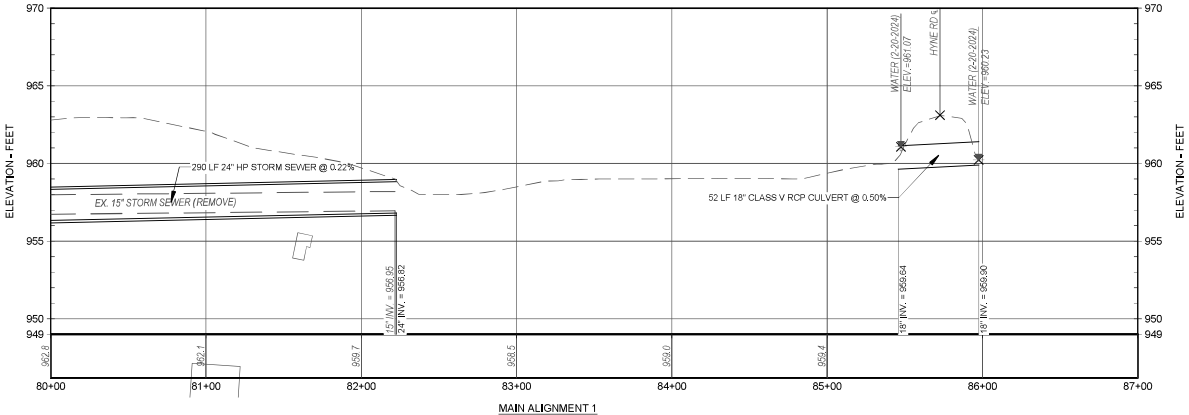
13 OF 1




NOTE: EXPOSE EX, UTILITIES PRIOR TO INSTALLATION OF STORM SEWER THIS SHEET, NOTIFY ENGINEER IF ANY CONFLICTS EXIST.




- CONSTRUCTION NOTES:
1. NO STORAGE OF SPOILS OR MATERIALS WITHIN RIGHT OF WAY OF ANY ROAD WITHIN LIMITS OF PROJECT
 2. MAINTAIN ACCESS FOR ALL HOMEOWNERS AT ALL TIMES
 3. RESTORE ALL SIGNS & MAILBOXES TO LOCATIONS AS NEAR POSSIBLE TO EXISTING LOCATION AFTER COMPLETION OF WORK, CONSIDERED INCIDENTAL TO CONSTRUCTION
 4. ROAD SHALL BE PASSABLE AND HAVE ONE LANE OPEN AT ALL TIMES
 5. AT THE END OF EACH WORK DAY, CONTRACTOR SHALL PROVIDE TEMPORARY PIPE OR OTHER CONNECTION APPROVED BY ENGINEER, TO PROVIDE STORM SEWER FLOW AT ALL TIMES. ALL STORM INLETS SHALL BE SECURED SO NO SEDIMENT MAY ENTER STORM SEWER SYSTEM.






GEI Consultants
382 CONSULTANTS OF MICHIGAN, P.C.
401 S. WASHINGTON SQUARE
SUITE 103
LANSING, MI 48233
(313) 465-4800

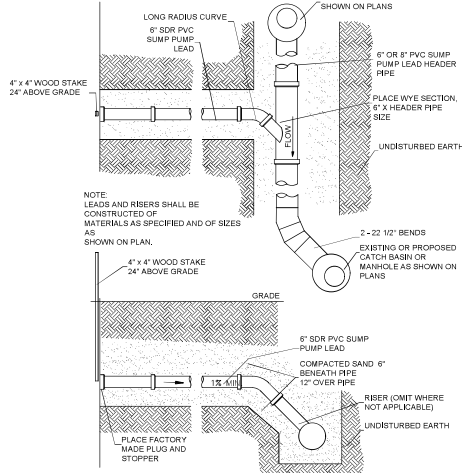


LIVINGSTON COUNTY DRAIN COMMISSIONER

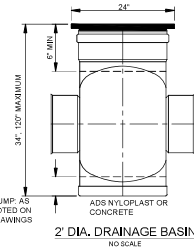
BRIGHTON NO. 4 DRAIN
A PART OF SECTIONS 8, 9, 16, AND 17 BRIGHTON TWP.,
T2N, R6E, LIVINGSTON COUNTY MICHIGAN

P.E. No.: 53847			
Approved:		BJC	
Checked:		BJC	
Drawn:		MJWL/CM	
Designed:		LCM	
GEI Project		2000946	
<p>Attention: 1"</p>  <p>If this scale bar does not measure 1" then drawing is not original scale.</p>			
SHEET NAME			
PLAN & PROFILE STA 80+00 - 90+00			
DWG NO. 02-C-09			
SHEET NO. 14 OF 15			

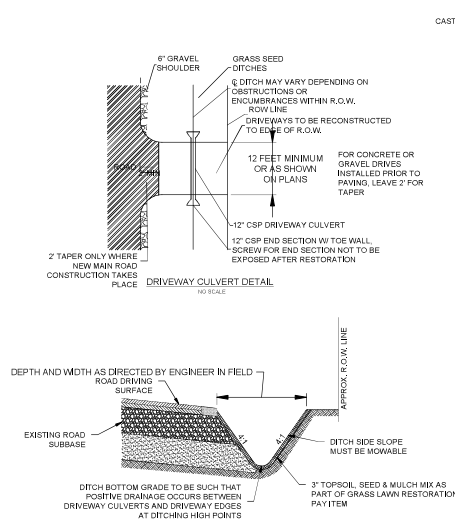
Preliminary



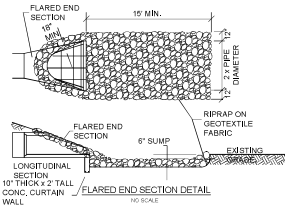
NEW STORM LEAD CONNECTION DETAIL
NO SCALE



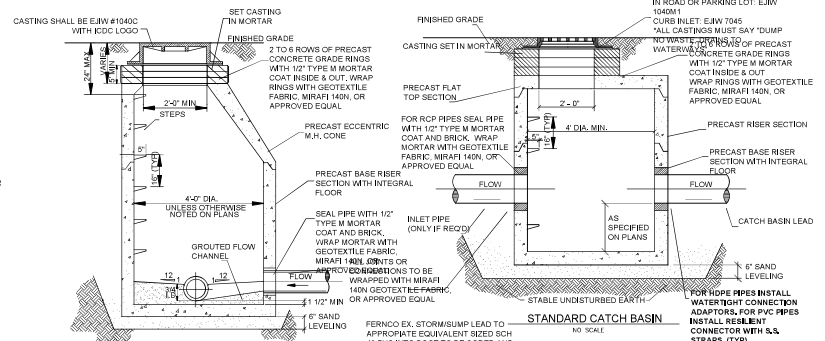
ALL HOPE OR PVC STRUCTURES TO BE DELIVERED & INSTALLED 1\"/>



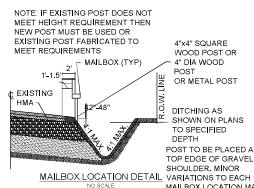
TYPICAL ROAD DITCH DETAIL
NO SCALE



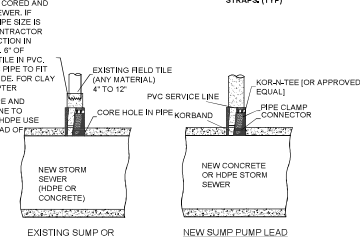
FLARED END SECTION DETAIL
NO SCALE



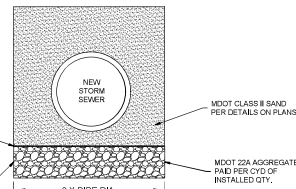
STANDARD STORM MANHOLE
NO SCALE



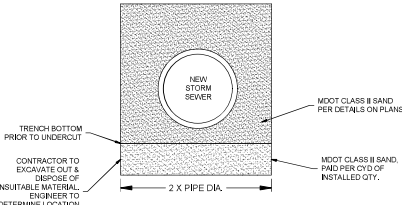
MAILBOX LOCATION DETAIL
NO SCALE



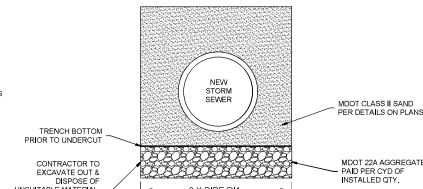
EXISTING SUMP OR STORM LEAD CONNECTION DETAIL
NO SCALE



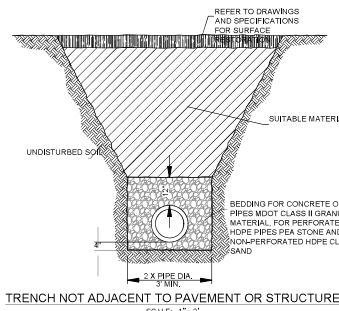
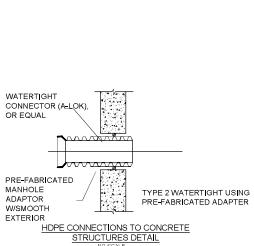
NEW SUMP PUMP LEAD
NO SCALE



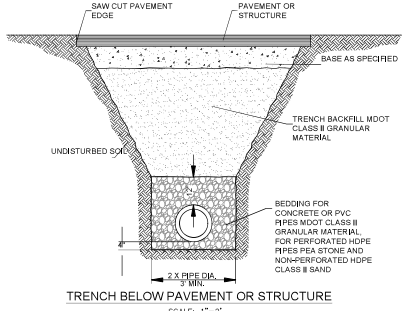
SUBGRADE UNDERCUT, TYPE 1
NO SCALE



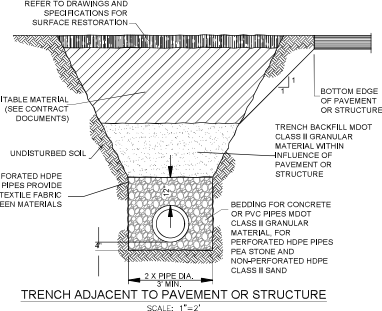
SUBGRADE UNDERCUT, TYPE 2
NO SCALE



TRENCH NOT ADJACENT TO PAVEMENT OR STRUCTURE
SCALE: 1\"/>



TRENCH BELOW PAVEMENT OR STRUCTURE
SCALE: 1\"/>



TRENCH ADJACENT TO PAVEMENT OR STRUCTURE
SCALE: 1\"/>



LIVINGSTON COUNTY DRAIN COMMISSIONER
BRIGHTON NO. 4 DRAIN
A PART OF SECTIONS 8, 9, 16, AND 17 BRIGHTON TWP.
T2N, R0E, LIVINGSTON COUNTY MICHIGAN

P.E. No.: 60347
Approved: BPE NAMED
Checked: BHC BY
Drawn: DERWILBY
Designed: DSM BY
GEI Project: 2000946

Attention: 1\"/>

0			

