

- Sharp Drain Drainage District
- Drain Commissioner Open Drain
- Private Open Drain
- Drain Commissioner Enclosed Drain
- 1994 Drain Cleanout

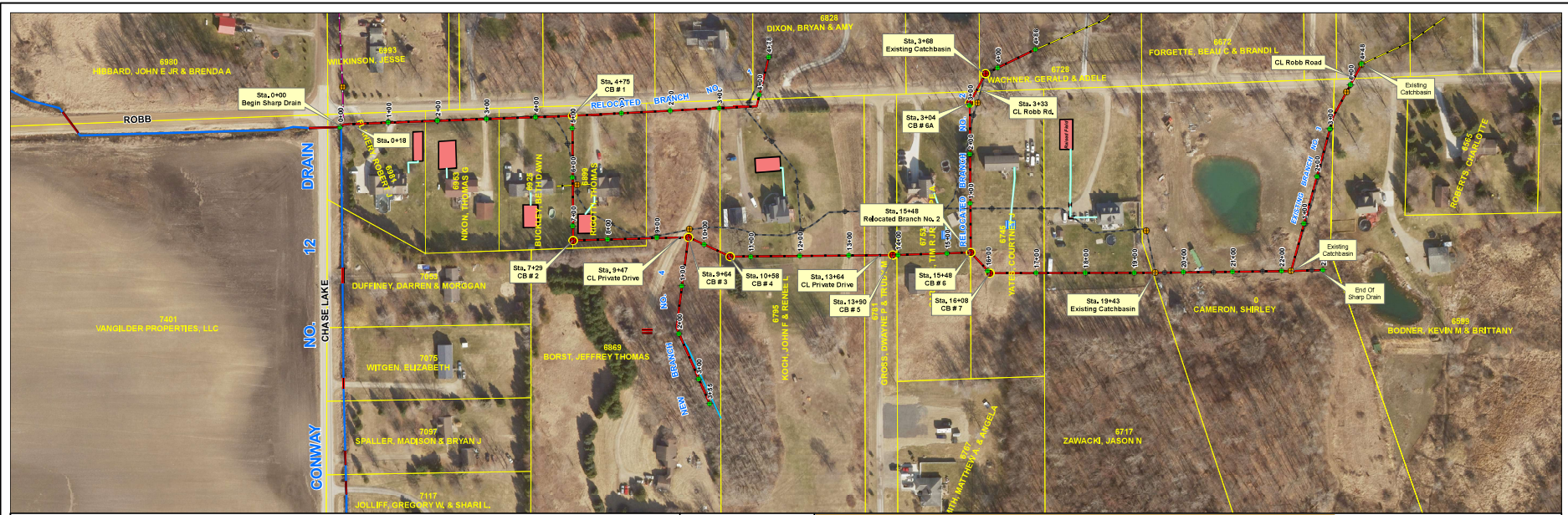
Sharp Drain Maintenance History				
Date Established	1919			
Total Length (feet)	3,274			
Drainage District (acres)	106			
Clean Out	Date	Drain Portion	Length	Years since cleanout
Clean Out 1	1994	Part Tile	733	22

Livingston County Drain Commissioner  
 2300 E Grand River  
 Howell, Mi. 48843  
 Printed February 17, 2016

## SharpDrain Maintenance History



1 inch = 300 feet



Livingston County Drain Commissioner  
 2300 E. Grand River  
 Howell, MI. 48843  
 Orthophoto Flown 2020  
 Printed November 20, 2023

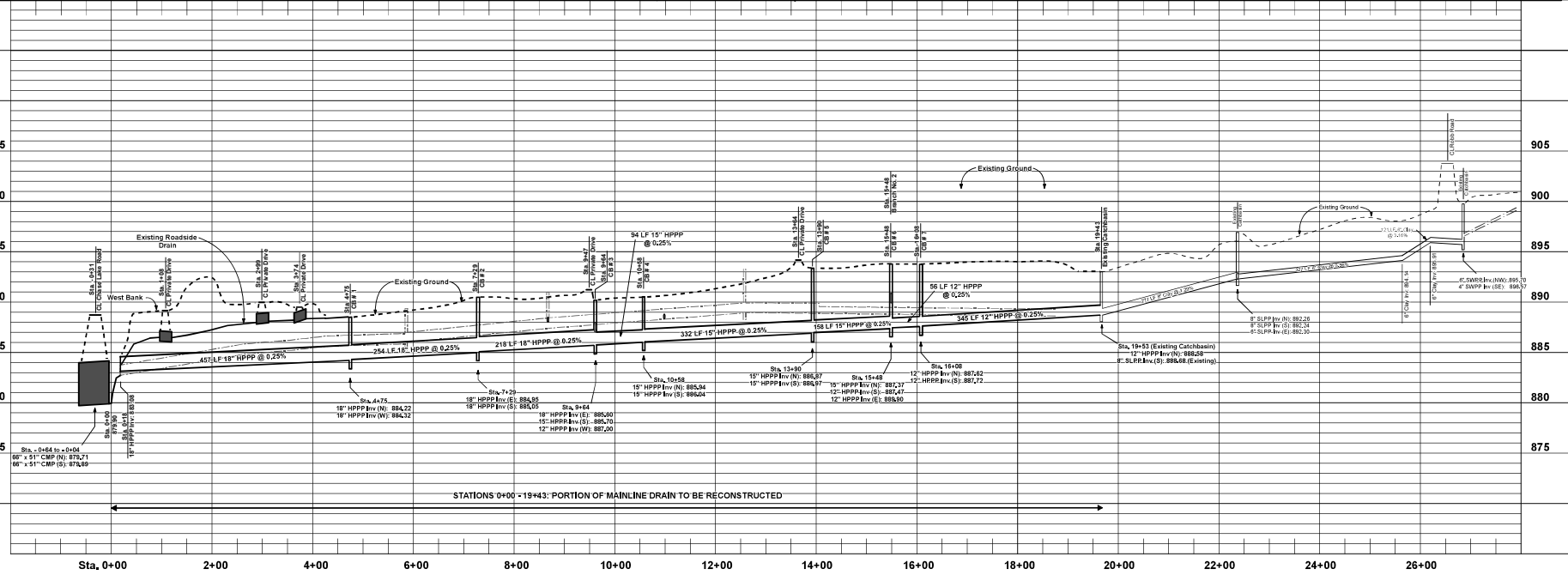
### Sharp Drain

- Proposed Sharp Drain
- Existing Sharp Drain
- LCRC Enclosed Drain
- Private Enclosed Drain
- Sewer Line
- Raised Septic Field
- Existing Drain Station
- Culvert
- LCDC Open Drain
- Private
- + Proposed Drain Stations
- + Existing Catch Basin
- + Proposed CB

1 inch = 100 feet

Brian Jonckheere  
 Livingston County Drain Commissioner  
 2300 E Grand River  
 Howell, MI 48843  
 Phone: (517) 545-9040  
 Fax: (517) 545-9668

## SHARP DRAIN PROPOSED RELOCATED MAIN LINE



STATIONS 0+00 TO 19+43: PORTION OF MAINLINE DRAIN TO BE RECONSTRUCTED

NO.	REVISION	DATE

DESIGNED BY: \_\_\_\_\_  
 DRAWN BY: \_\_\_\_\_  
 CHECKED BY: \_\_\_\_\_

SCALE: HORIZ 1" = 100'  
 VERT 1" = 5'

DWG. NO. DATE: March 23, 2016  
 REV 11-20-2023



Livingston County Drain Commissioner  
 2300 E. Grand River  
 Howell, MI 48843  
 Orthophoto Flown 2020  
 Printed November 22, 2023

**Sharp Drain**

- Existing Sharp Drain
- LCRC Enclosed Drain
- Private Enclosed Drain
- Proposed Sharp Drain
- Sewer Line
- Raised Septic Field
- Septic Field
- Culvert
- LCDC Open Drain
- Private Open Drain
- Proposed Drain Stations
- Proposed Catchbasin

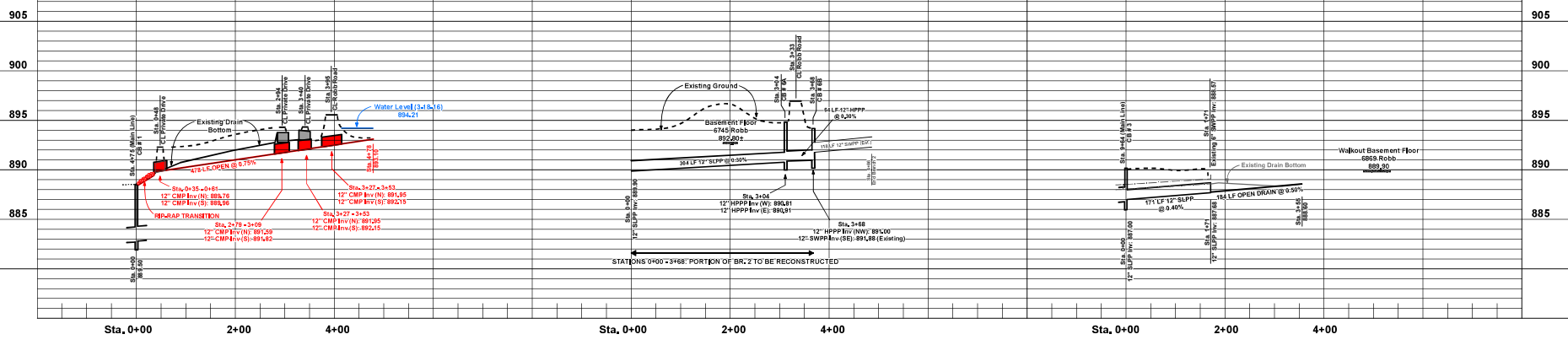


1 inch = 100 feet

**RELOCATED BRANCH NO. 1**

**RELOCATED BRANCH NO. 2**

**NEW BRANCH NO. 4**



**SHARP DRAIN**  
**BRANCH NO. 1, 2 AND 4**

PROJECT

NO.	DATE	REVISION

DESIGNED BY: \_\_\_\_\_  
 CHECKED BY: \_\_\_\_\_  
 SCALE: HORIZ 1" = 100'  
 VERT 1" = 5'  
 DWG. NO. March 23, 2016  
 DATE REV 11-22-2023

2 OF 2

Brian Jonchreare  
 Livingston County Drain Commissioner  
 2300 E Grand River  
 Howell, MI 48843  
 Phone: (517) 546-0040  
 Fax: (517) 545-9668