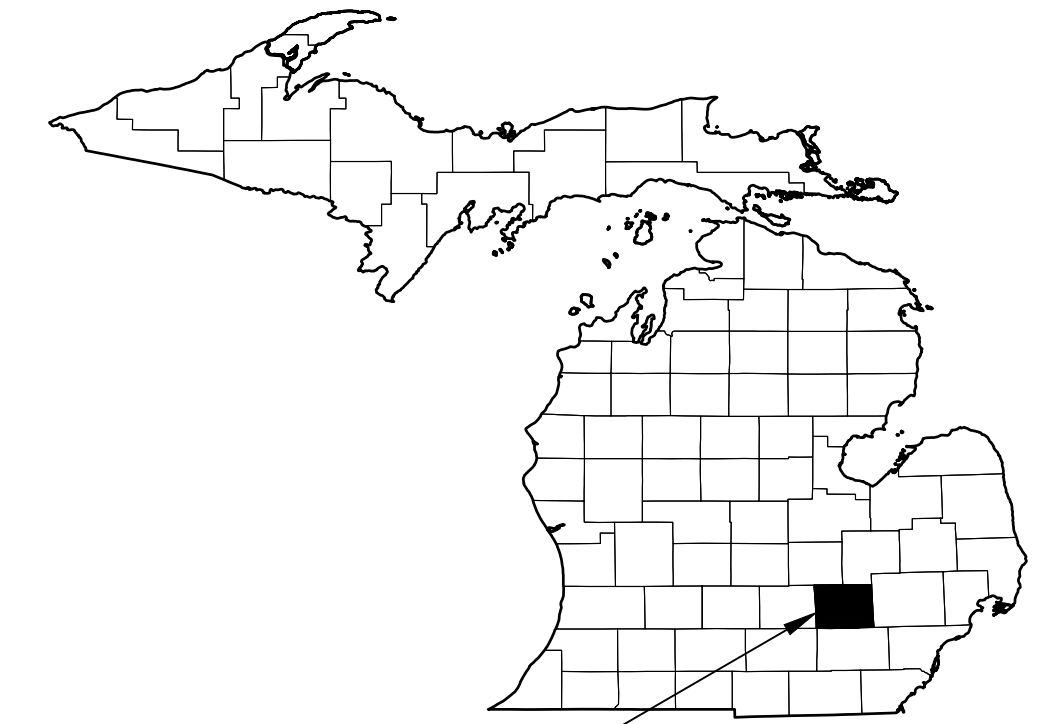


# CONSTRUCTION PLANS FOR WINANS LAKE DRAIN IMPROVEMENTS

## LIVINGSTON COUNTY DRAIN BOARD

SECTIONS 14, HAMBURG TOWNSHIP, T1N-R5E, LIVINGSTON COUNTY, MICHIGAN

**BRIAN JONCKEERE**  
LIVINGSTON COUNTY DRAIN COMMISSIONER



PROJECT LOCATION  
**KEY MAP**  
NOT TO SCALE

**CONTACTS:**

**LIVINGSTON COUNTY DRAIN COMMISSIONER**  
ATTN: KEN RECKER  
2300 EAST GRAND RIVER, SUITE 105  
HOWELL, MI 48843  
TELEPHONE: (517) 546-0040

**LIVINGSTON COUNTY ROAD COMMISSION**  
ATTN: KIM HILLER  
3535 GRAND OAKS DRIVE  
HOWELL, MI 48843  
TELEPHONE: (517) 546-9628

**CHARTER COMMUNICATIONS**  
ATTN: DAN BIELACZYK  
1392 TRADE CENTRE DRIVE  
TRAVERSE CITY, MI 49696  
(231) 941-3819

**AT&T**  
ATTN: STEVEN ALLSHOUSE  
550 S MAPLE ROAD  
ANN ARBOR, MI 48103  
OFFICE: (248) 494-2742

**CONSUMERS ENERGY**  
ATTN: TONNA WILCOX  
3201 EAST COURT STREET  
FLINT, MI 48501  
TELEPHONE: (810) 760-3486

**FRONTIER COMMUNICATIONS**  
ATTN: MARK V. STEVENS  
1943 WEST M-21  
OWOSSO, MI 48867  
OFFICE: (989) 725-6471

**CONSUMERS ENERGY**  
ATTN: TRACY MAHAR  
530 W WILLOW STREET  
LANSING, MI 48906  
TELEPHONE: (517) 204-9018

COUNTY DRAINS

COUNTY ROADS

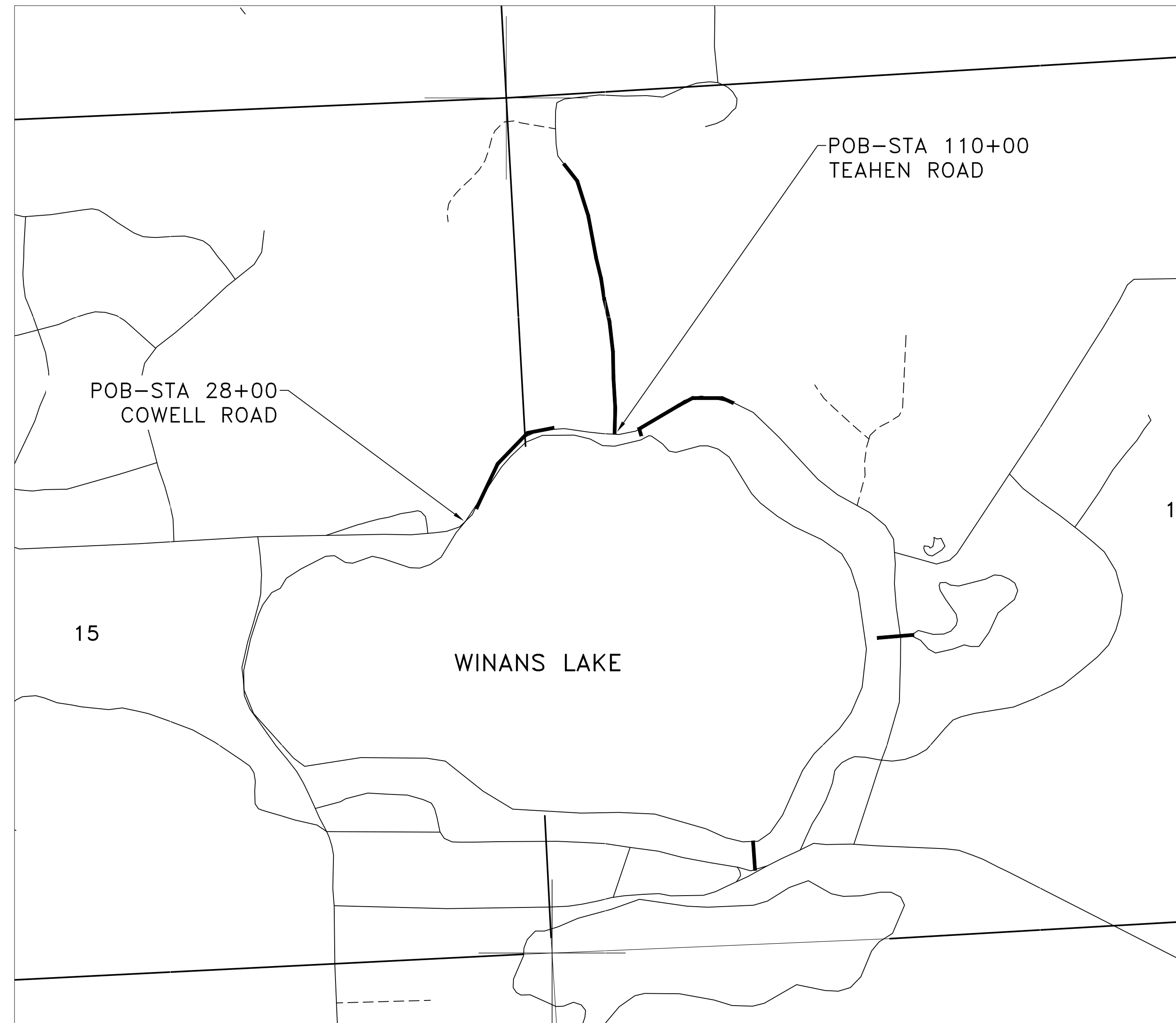
CABLE

TELEPHONE

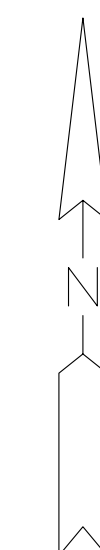
GAS

TELEPHONE

ELECTRICAL LINES



**LOCATION MAP**  
NO SCALE



SHEET INDEX	
GENERAL SHEETS	SHEET NO.
COVER	1.0
LEGEND SHEET	X
GENERAL CONSTRUCTION NOTES AND SOIL EROSION CONTROL DETAILS	X
DISTRICT MAP	3.0
PLAN SHEET MAP	X
WINANS LAKE OUTLET PLAN AND PROFILE	6.0
WINANS LAKE DRAIN TEAHEN ROAD PLAN AND PROFILES	7.0-9.1
DETENTION BASIN GRADING	10.0
OUTLET 3A PLAN PROFILE	11.0
OUTLET 3 COWELL ROAD PLAN AND PROFILE	12.0
OUTLET 2 COWELL ROAD PLAN AND PROFILE	13.0-14.0
OUTLET 1 COWELL ROAD PLAN AND PROFILE	15.0
CROSS SECTIONS	16.0
DETAIL SHEETS	X

PRELIMINARY PLANS	
JOB NO. LDC1006.01F	SHEET 1.0

555 S. Saginaw Street, Suite 201  
Flint, MI 48502  
810.235.2555  
www.wadefirm.com

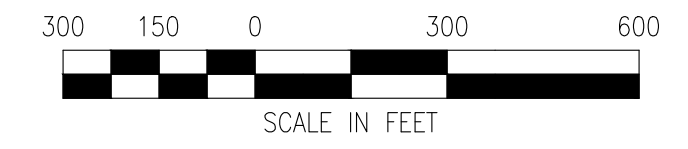
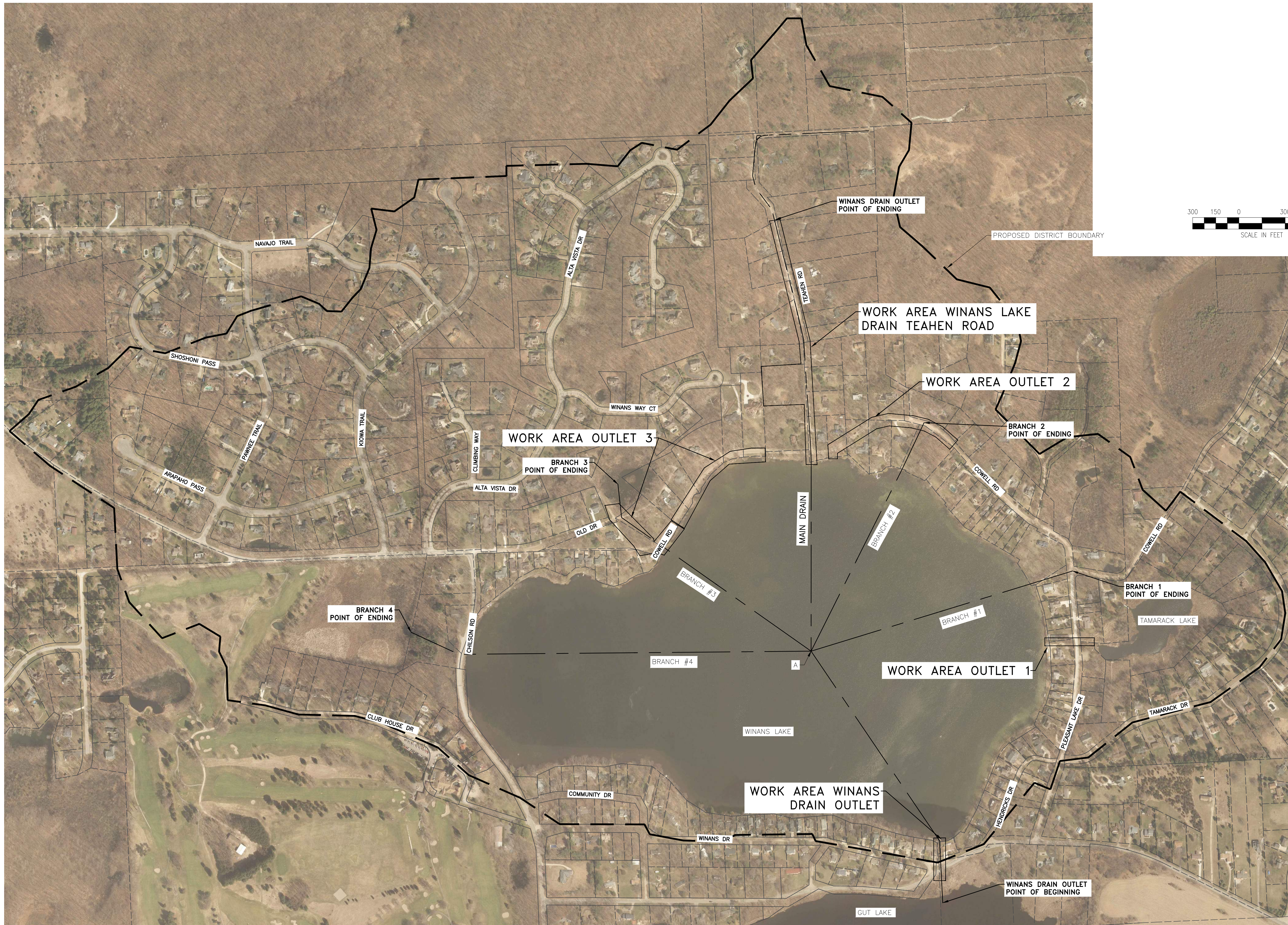
PREPARED UNDER THE SUPERVISION OF:

PROJECT MANAGER: JASON KEVON, FIELD BOOK INFORMATION: CA:\PW\WORK\21033636\_GCS-PLTS-COVER.DWG - 1.0 - PLOTTED 5/20/2024 12:35 PM BY KRAGENBRINK, TANNER

© Wade Trim Group, Inc. WINANS LAKE DRAIN



PROJECT MANAGER: JASON KEVON, FIELD BOOK INFORMATION: CA:\PW\WORK\21033636\GCS-PLTS-COVER-DIST-MAPS.DWG - 3.0 - PLOTTED 5/20/2024 12:35 PM BY KRAGENBRINK, TANNER



REV#	DATE	DESCRIPTION	BY

555 S. Sagehen Street, Suite 201  
 Reno, NV 89502  
 www.wadetrim.com

**LIVINGSTON COUNTY  
 DRAIN COMMISSIONER  
 WINANS LAKE**

WINANS LAKE DISTRICT MAP

ISSUED FOR: DATE: BY:

JOB NO.  
**LDC1006.01F**

SHEET  
**3.0**

© Wade Trim Group, Inc. WINANS LAKE IMPROVEMENTS



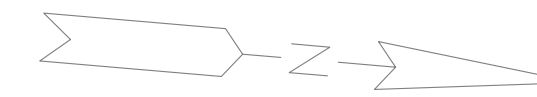
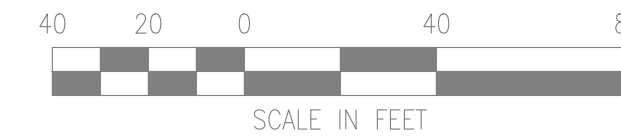
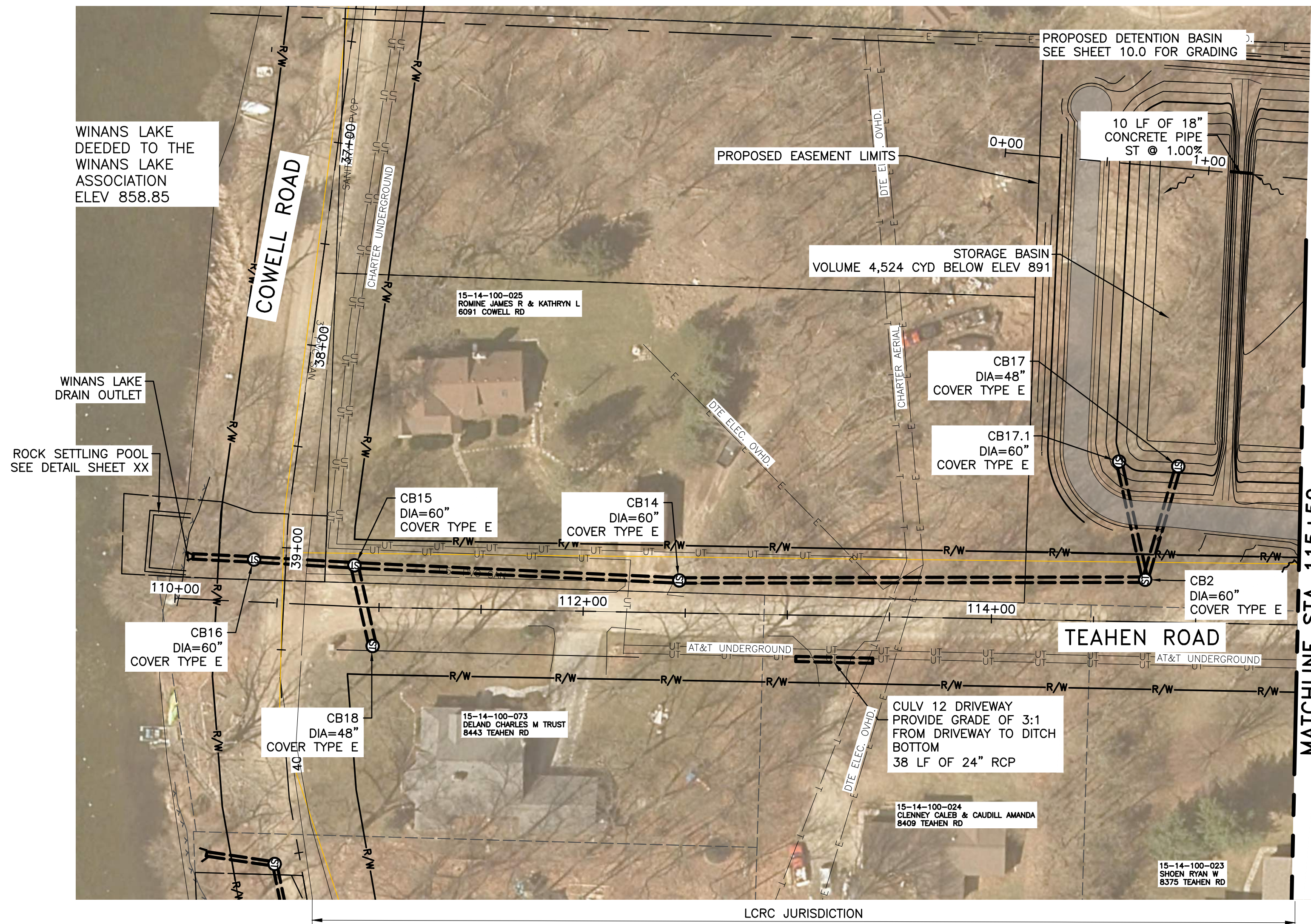




PROJECT MANAGER: JASON NEWSON  
 CIVIL ENGINEER: JASON NEWSON  
 FIELD BOOK INFORMATION: - 7.0 - PLOTTED 9/20/2024 12:36 PM BY: KRACENBRINK, TANNER

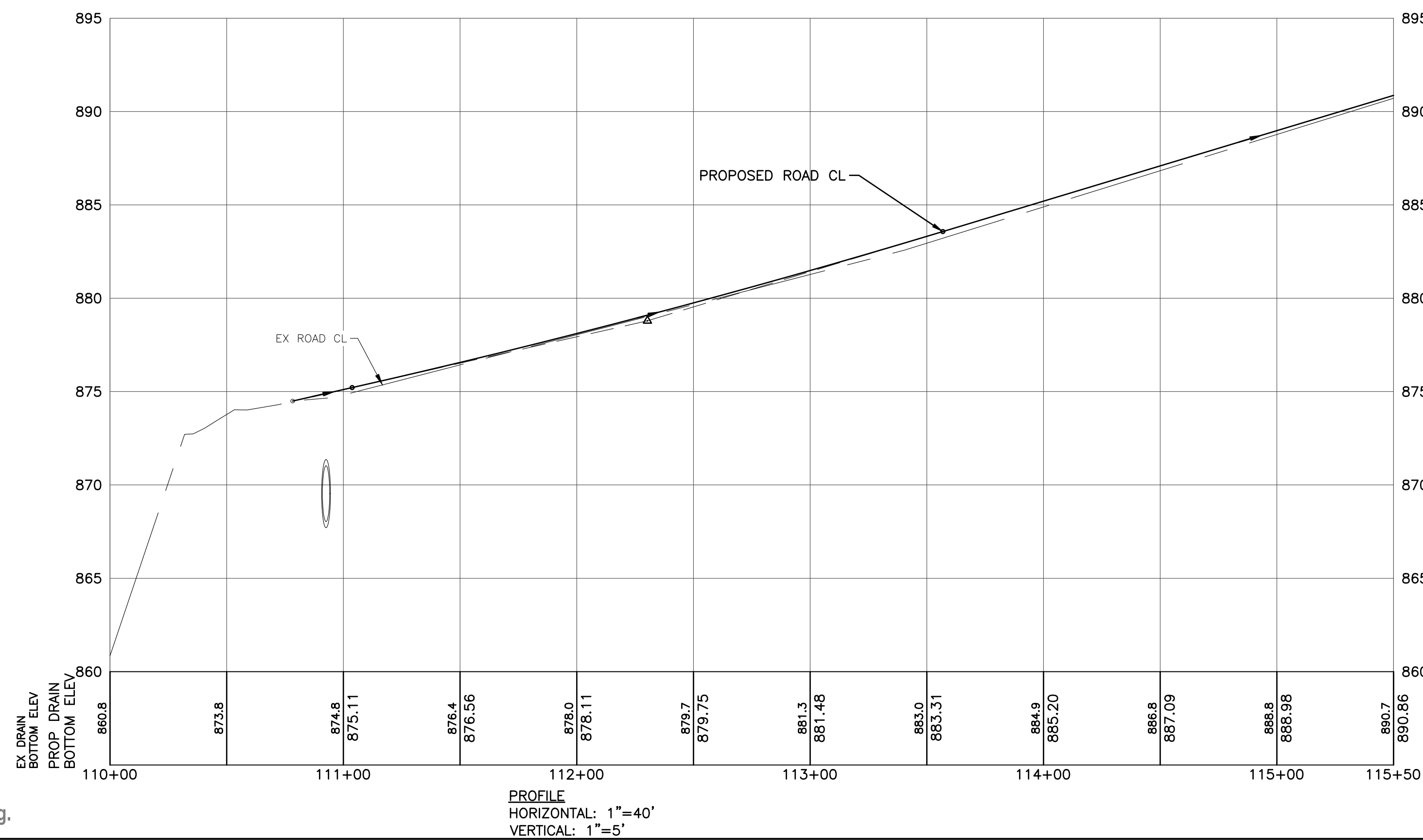


Know what's below.  
 Call before you dig.



KEY	FROM STATION	TO STATION	SIDE	DESCRIPTION	QUANTITY
1 T			BOTH	SEEDING OF ALL DISTURBED AREAS	LUMP SUM
2 T			BOTH	MULCHING OF ONLY DISTURBED LAWN AREAS	LUMP SUM
19 P				RIPRAP SPILLWAY WHERE BANK EROSION EXISTS	EA
16 P				GRASS SPILLWAY	EA

FROM STATION	TO STATION	CLEAR AND GRUB LEFT	CLEAR AND GRUB RIGHT
		℄ TO T.O.B.	℄ TO T.O.B.



REV#	DATE	DESCRIPTION	BY

555 S. Sighaw Street, Suite 201  
 Flint, MI 48902  
 810.228.8505  
 www.wadetrims.com



LIVINGSTON COUNTY  
 DRAIN COMMISSIONER  
 WINANS LAKE  
 WINANS LAKE DRAIN TEAHEN ROAD  
 STA 110+00 TO STA 115+50 PLAN

ISSUED FOR:	DATE:	BY:
JOB NO. LDC1006.01F		
SHEET 7.0		

PRELIMINARY PLANS ISSUED FOR REVIEW

© Wade Trim Group, Inc. WINANS LAKE IMPROVEMENTS



















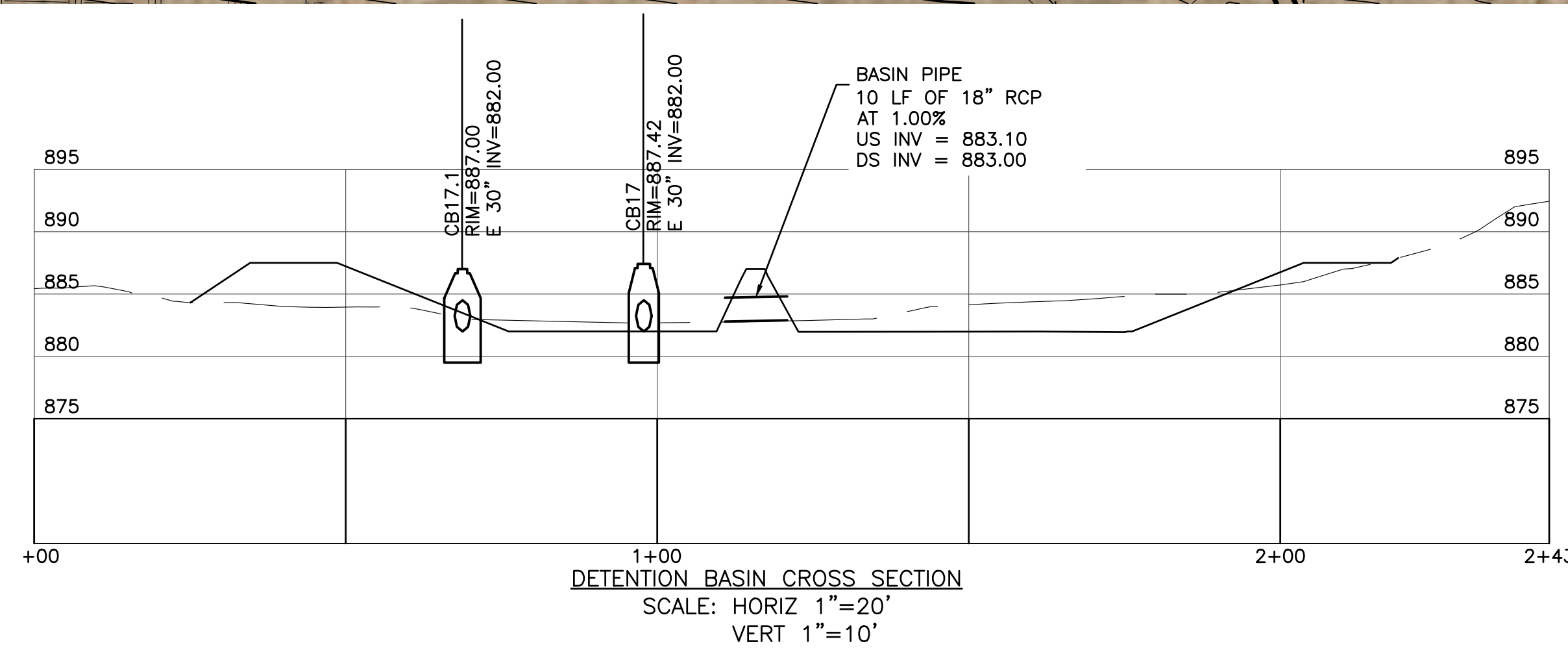
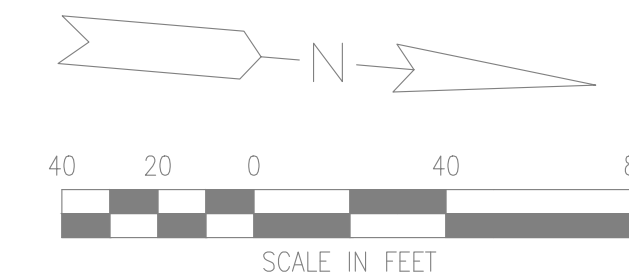
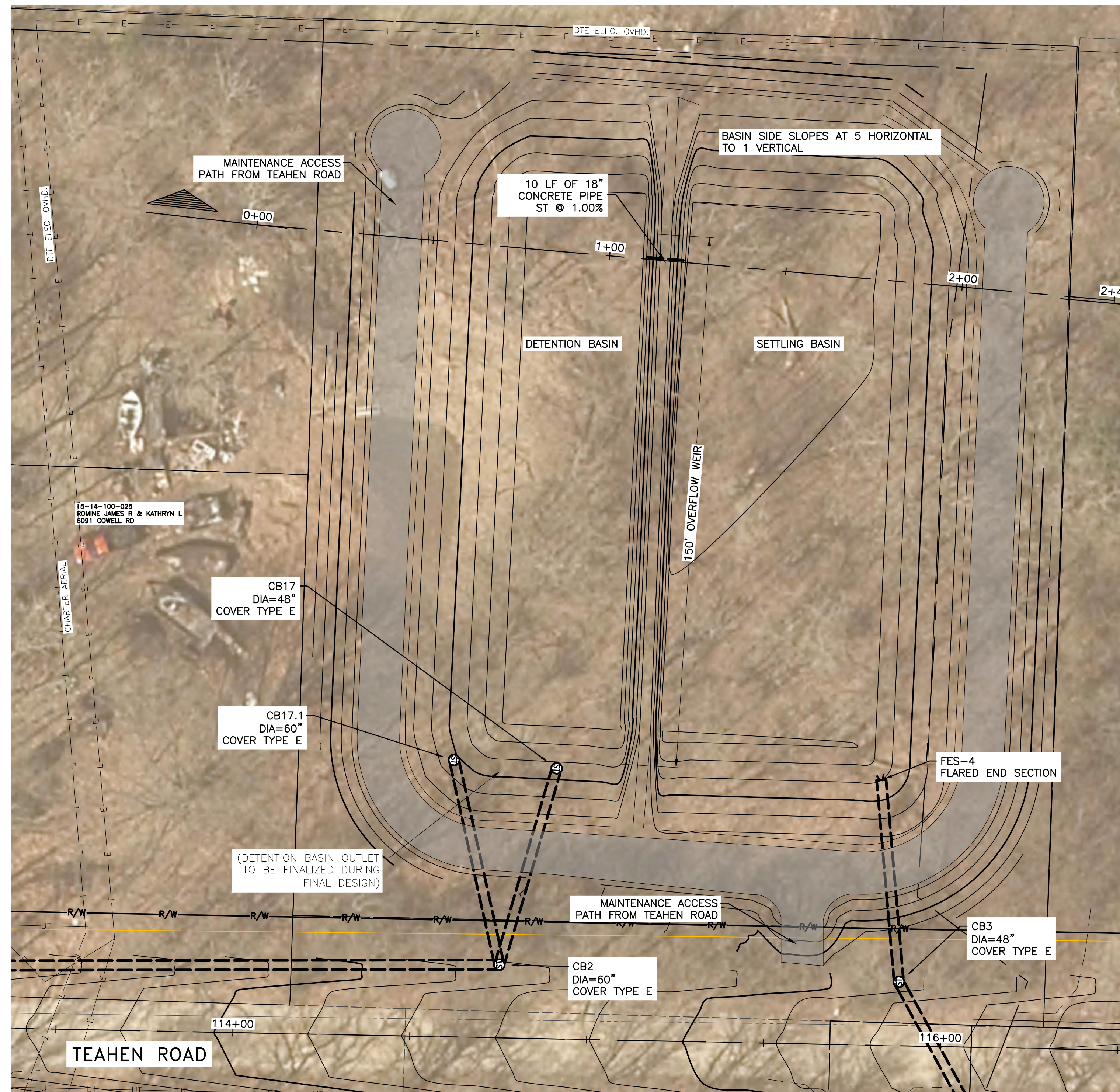




PROJECT MANAGER: JASON NEWSON  
 CIVIL ENGINEER: JASON NEWSON  
 FIELD BOOK INFORMATION: C:\WORK\2024\1006\10.0 - PLOTTED\_5/20/2024 12:36 PM BY: KRISTENBINK, TANNER



Know what's below.  
 Call before you dig.



REV#	DATE	DESCRIPTION	BY

555 S. Sigman Street, Suite 201  
 Flint, MI 48902  
 810.228.4835  
 www.wadetrims.com

LIVINGSTON COUNTY  
 DRAIN COMMISSIONER  
 WINANS LAKE  
 WINANS LAKE DRAIN TEAHEN ROAD  
 DETENTION BASIN GRADING

ISSUED FOR:	DATE:	BY:
JOB NO. LDC1006.01F		
SHEET 10.0		

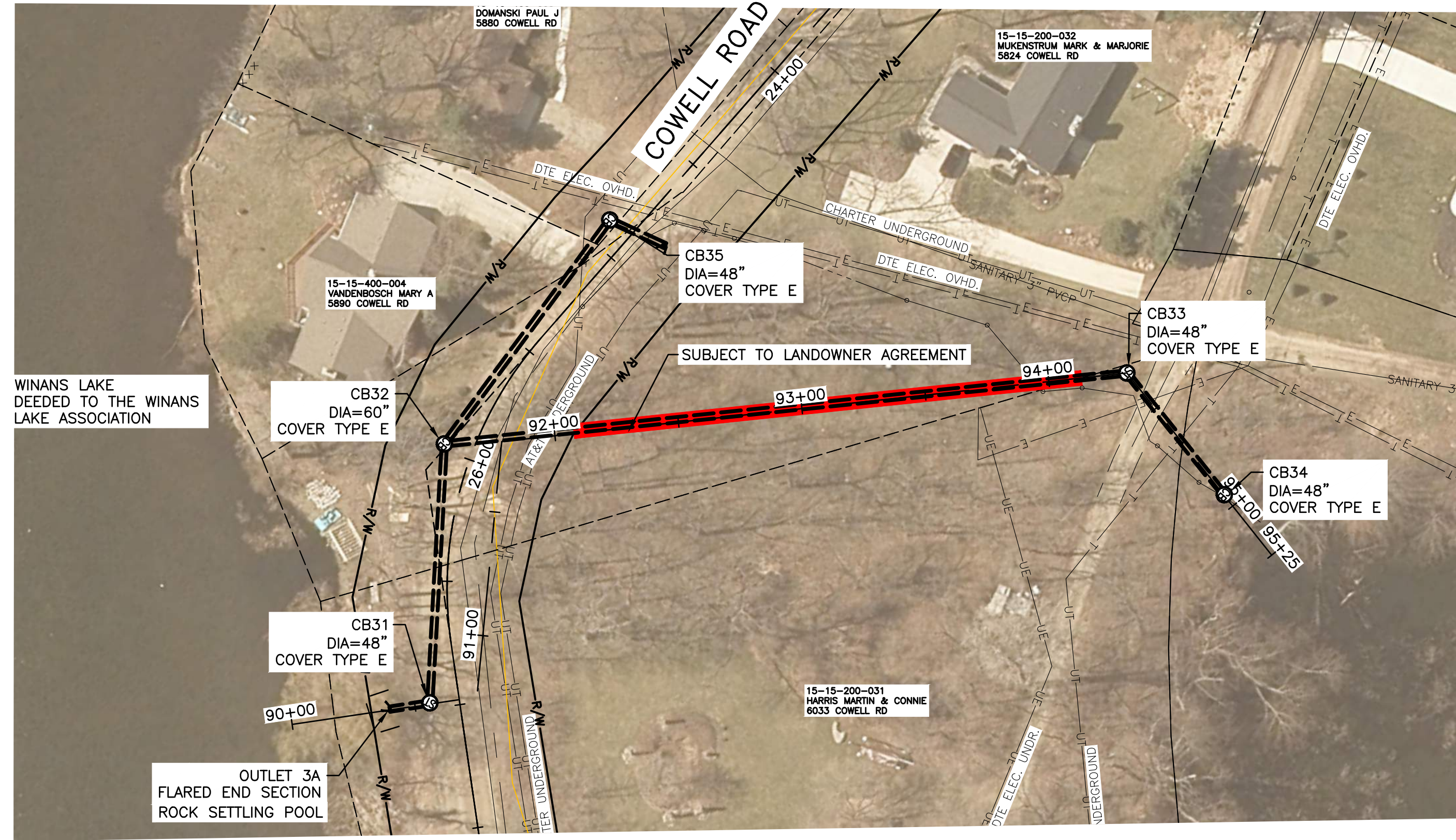
PRELIMINARY PLANS ISSUED FOR REVIEW

© Wade Trim Group, Inc. WINANS LAKE IMPROVEMENTS



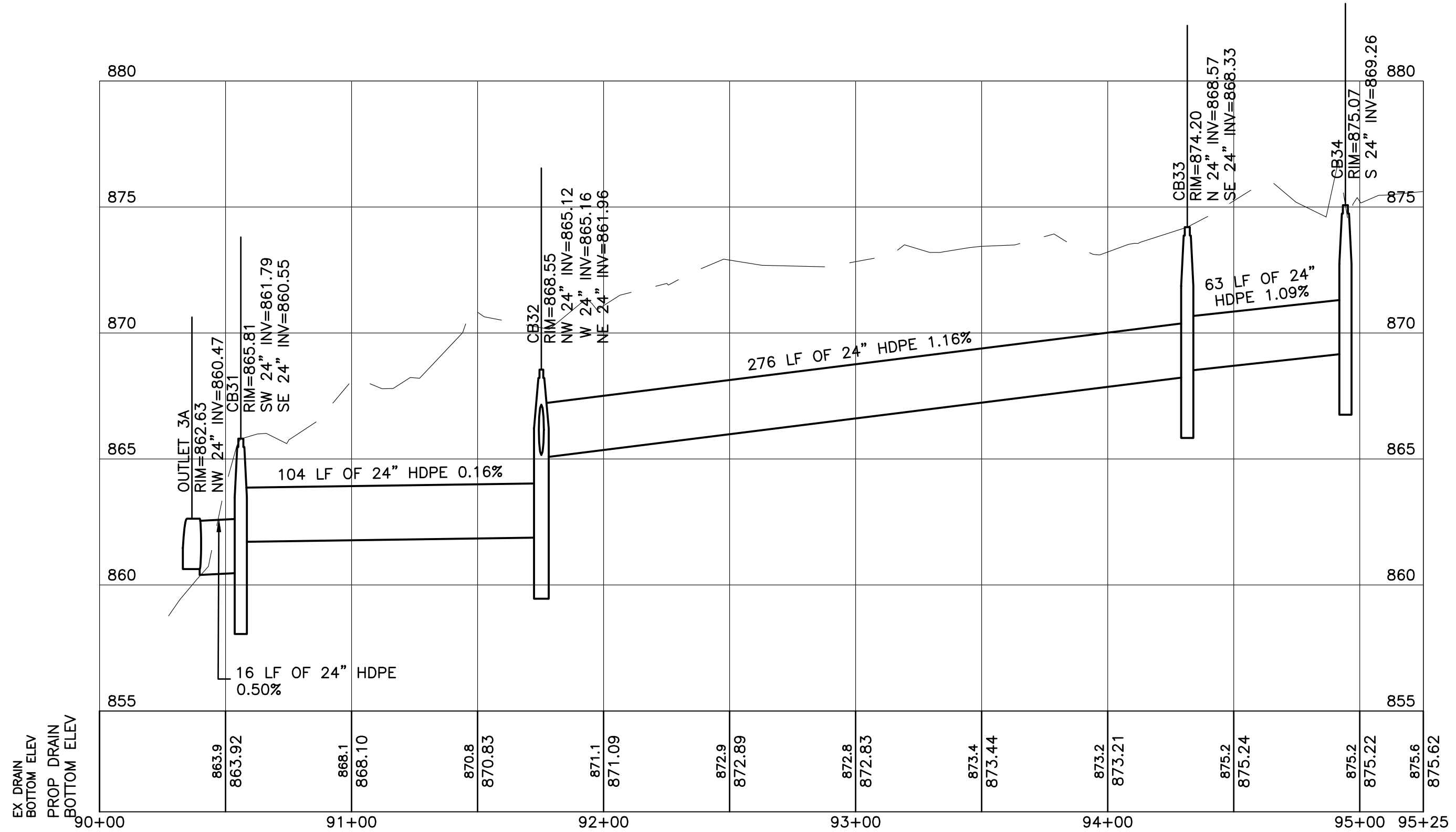
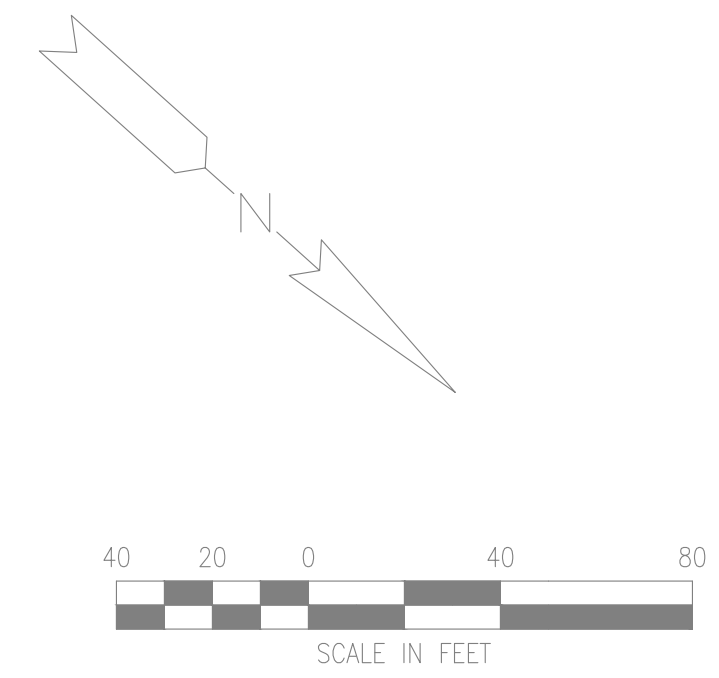


Know what's below.  
 Call before you dig.



**EROSION CONTROL TABLE**

KEY	FROM STATION	TO STATION	SIDE	DESCRIPTION	QUANTITY
① T			BOTH	SEEDING OF ALL DISTURBED AREAS	LUMP SUM
② T			BOTH	MULCHING OF ONLY DISTURBED LAWN AREAS	LUMP SUM
					EA
					EA



REV#	DATE	DESCRIPTION	BY

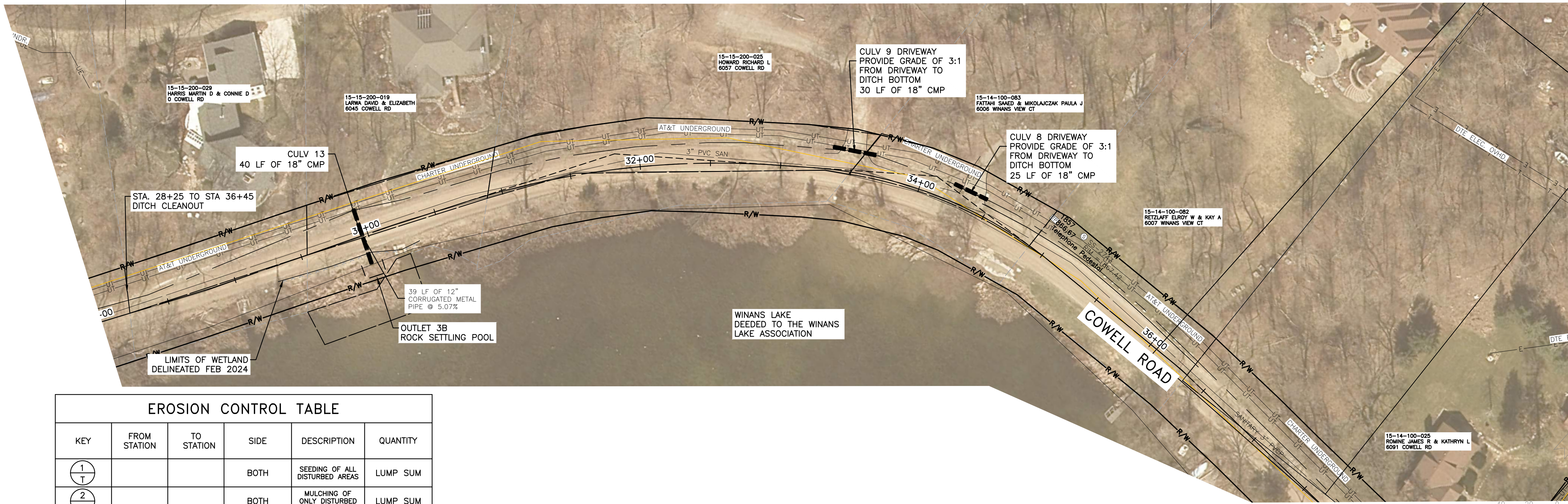
555 S. Sighaw Street, Suite 201  
 Flint, MI 48902  
 810.288.8855  
 www.wadetrims.com

**LIVINGSTON COUNTY  
 DRAIN COMMISSIONER  
 WINANS LAKE**  
 OUTLET 3A PLAN PROFILE

ISSUED FOR:	DATE:	BY:
JOB NO. LDC1006.01F		
SHEET 11.0		

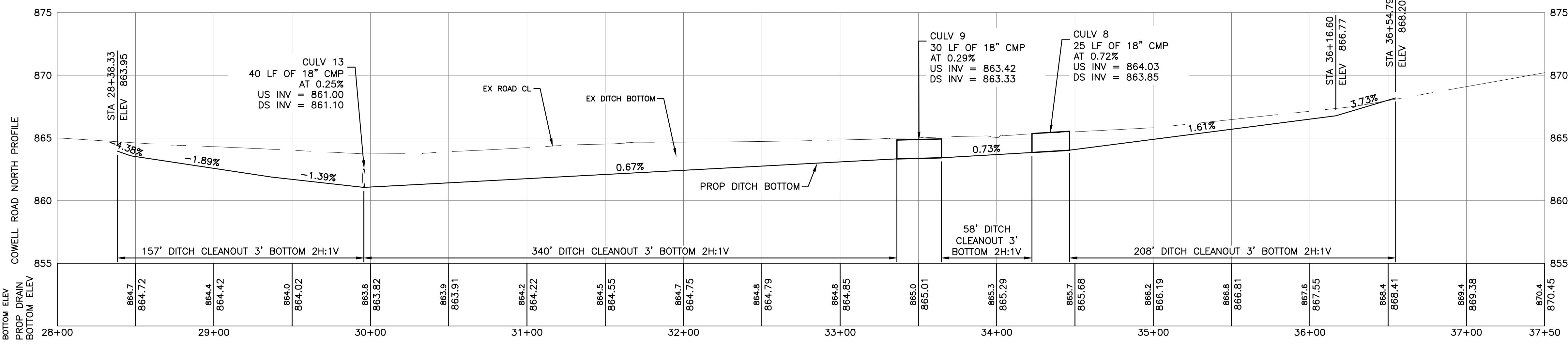
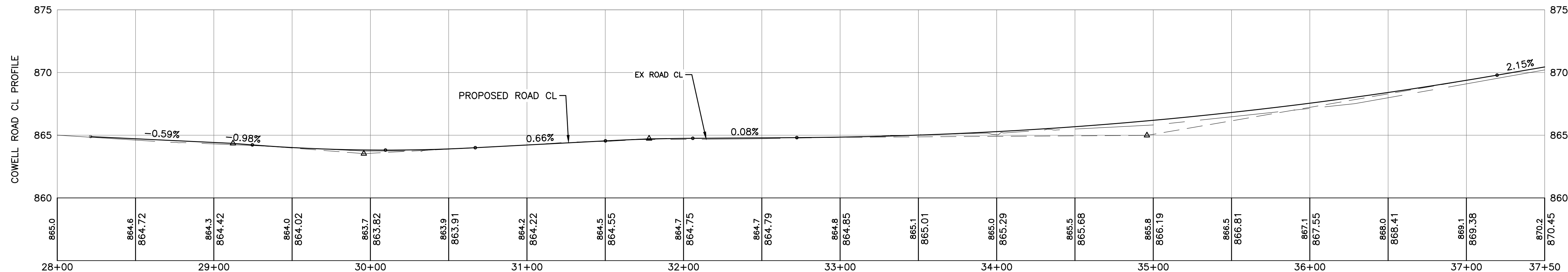


LCRC JURISDICTION



EROSION CONTROL TABLE

KEY	FROM STATION	TO STATION	SIDE	DESCRIPTION	QUANTITY
① T			BOTH	SEEDING OF ALL DISTURBED AREAS	LUMP SUM
② T			BOTH	MULCHING OF ONLY DISTURBED LAWN AREAS	LUMP SUM
⑬ P				RIPRAP SPILLWAY WHERE BANK EROSION EXISTS	EA
⑭ P				GRASS SPILLWAY	EA



Know what's below.  
Call before you dig.

PROJECT MANAGER: JASON KENYON FIELD BOOK INFORMATION: C:\WORKING\10232636\CSF-PLUS-PLAN PROFILE COWELL.DWG - 12.0 - PLOTTED: 3/20/2024 12:37 PM BY: KRIGENBRINK, TANNER

REV#	DATE	DESCRIPTION	BY

555 S. Sighaw Street, Suite 201  
Ft. Mill, SC 29502  
803.282.8255  
www.wadetrims.com



LIVINGSTON COUNTY  
DRAIN COMMISSIONER  
WINANS LAKE  
OUTLET 3 COWELL ROAD  
STA 28+00 TO STA 37+50 PLAN PROFILE

ISSUED FOR: DATE: BY:

JOB NO.  
LDC1006.01F

SHEET  
12.0

PRELIMINARY PLANS ISSUED FOR REVIEW

© Wade Trim Group, Inc. WINANS LAKE IMPROVEMENTS















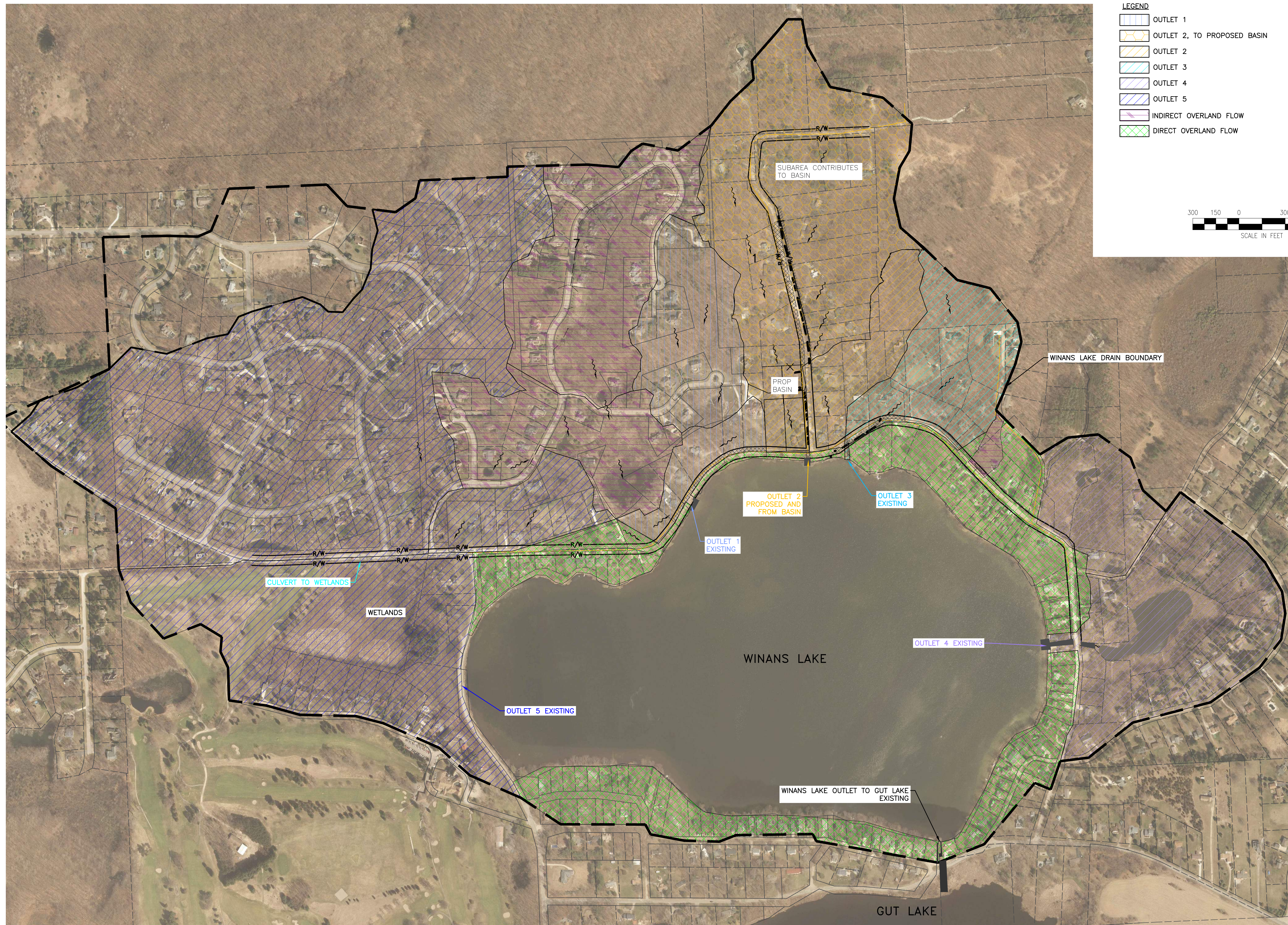




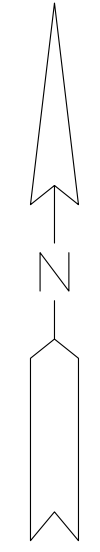
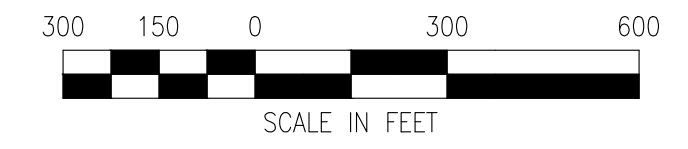




PROJECT MANAGER: JASON KENYON  
 CA:\PW\WORK\21033636\BASE-SUBAREAS.DWG - SUBAREAS - PLOTTED 5/20/2024 12:38 PM BY KRAGENBRINK, TANNER



- LEGEND**
- OUTLET 1
  - OUTLET 2, TO PROPOSED BASIN
  - OUTLET 2
  - OUTLET 3
  - OUTLET 4
  - OUTLET 5
  - INDIRECT OVERLAND FLOW
  - DIRECT OVERLAND FLOW



REV#	DATE	DESCRIPTION	BY

555 S. Saginaw Street, Suite 201  
 Flint, MI 48902  
 www.wadetrिम.com

**LIVINGSTON COUNTY  
 DRAIN COMMISSIONER  
 WINANS LAKE**  
 SUBAREA MAP

ISSUED FOR: DATE: BY:

JOB NO.  
**LDC1006.01F**

SHEET  
**1**

© Wade Trim Group, Inc. WINANS LAKE IMPROVEMENTS